

# Beanie Party

BY CHERRY PICKING



Beanies,  
Baby!

According to the  
beanie pattern from





# Beanie Party

BY CHERRY PICKING

Important, please read!

On each panel you will find SIX beanies printed according to kibadoo's great sewing pattern. You will also see some adorable patches to stitch to the front or anywhere you like!

The beanies are drawn with a 6 mm seam allowance, suitable for a four-thread overlock. Included is the approximate head circumference for each beanie. Should you need the beanie to be a bit larger, cut the beanie to include a bit of white for the seam allowance. Similarly, if you need the beanie to be smaller, cut slightly into the printed area. How the beanie fits also depends greatly on the lining fabric you choose.

A thicker knit jersey will create a tighter fit.

There are three variations from which to choose.

1. Super simple beanie - No turned up brim and no lining.  
Without lining, the beanie fits a head circumference of approximately 58-60 cm.  
Or with a knit jersey lining, the beanie will fit a head circumference of approximately 56-58 cm.
2. Beanie with turned brim and lining (knit jersey) - will fit a head circumference of 56 cm.
3. Reversible beanie sewn from two panels - will fit a head circumference of 54 cm.

And then everyone has a slightly different idea about how they like their beanies to fit and what is comfortable to him or her. We suggest cutting them a bit more generously, basting and trimming if necessary before the final stitching.

Please read through the instructions entirely before beginning, as each variation has steps included from the previous style.

Enjoy!





# Beanie Party

BY CHERRY PICKING

## Patches

Incorporate the patches into your design any which way you like!

I like to adhere Vliesofix (fusible bonding) to the patch wrong side and iron the patches on wherever I like. To appliqué, select a wide, narrow zigzag stitch. Use a piece of tear-away or wash-away stabilizer underneath your stitching to prevent the material from puckering.





# Beanie Party

BY CHERRY PICKING



1. Super simple Beanie - without lining and without turned up brim.



1. Cut one beanie piece and appliqué a patch (optional). If you would like the patch to be centered on the forehead, place it approximately 4 cm from the lower edge.



2. Appliqué the patch using zigzag stitch as described above.



3. Fold the beanie piece in half and align the back edges. Stitch the back seam with an overedge stitch.



4. Lay your work so that the upper edges align and stitch with an overedge stitch.



# Beanie Party

BY CHERRY PICKING



## 1. Super simple Beanie - without lining and without turned up brim.



5. If you have used an overlock to sew, thread the thread chain back through the seam thread using a large needle.



6. Simply thread the chain threads back into the seam to secure the stitching and for a clean look.



7. Tuck the bottom edge toward the wrong side/beanie inside and secure with a stretch stitch such as zigzag or coverstitch.

### Lined version:

If you would like a lined beanie, use the outer beanie piece as a pattern to cut a lining piece from knit Jersey, a textured jersey or similar material. It is best to choose a knit lining material with similar elasticity and recovery. Sew the lining piece as described above up to Step 5.

Insert the lining over the outer beanie piece fabric right sides together. Stitch the bottom seam. Leave a small opening for turning. Turn your work right side out and close the opening with a few hand stitches.



# Beanie Party

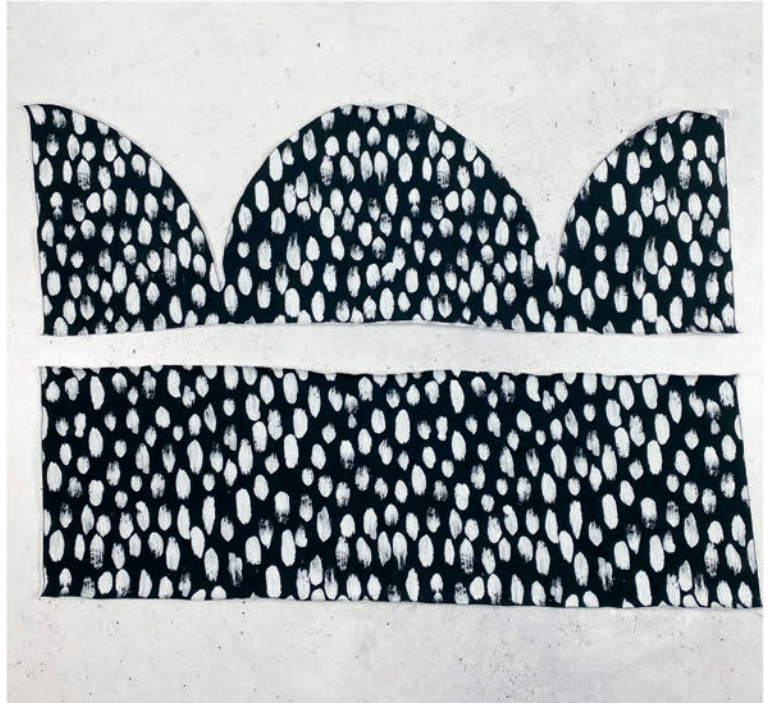
BY CHERRY PICKING



## 2. Beanie with turned brim and lining (jersey)



1. Cut one beanie piece. Along the right and left edges of the beanie piece are two marks: one mark for cutting the brim piece from the crown piece and one mark for folding the brim piece in half lengthwise.



2. Mark a line between the upper right and left marks. Cut the brim piece along this line.



3. Appliqué a patch to the bottom edge of the center of the brim piece as desired. Place the patch approximately 1.5 cm away from the lower edge.



4. Use the beanie pieces as a pattern to cut out lining pieces from a jersey material.



# Beanie Party

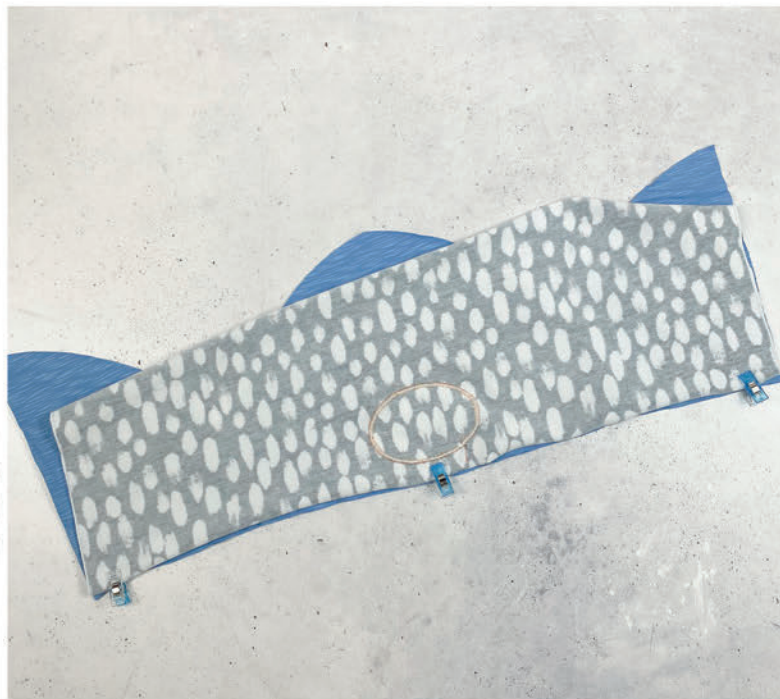
BY CHERRY PICKING



## 2. Beanie with turned brim and lining (jersey)



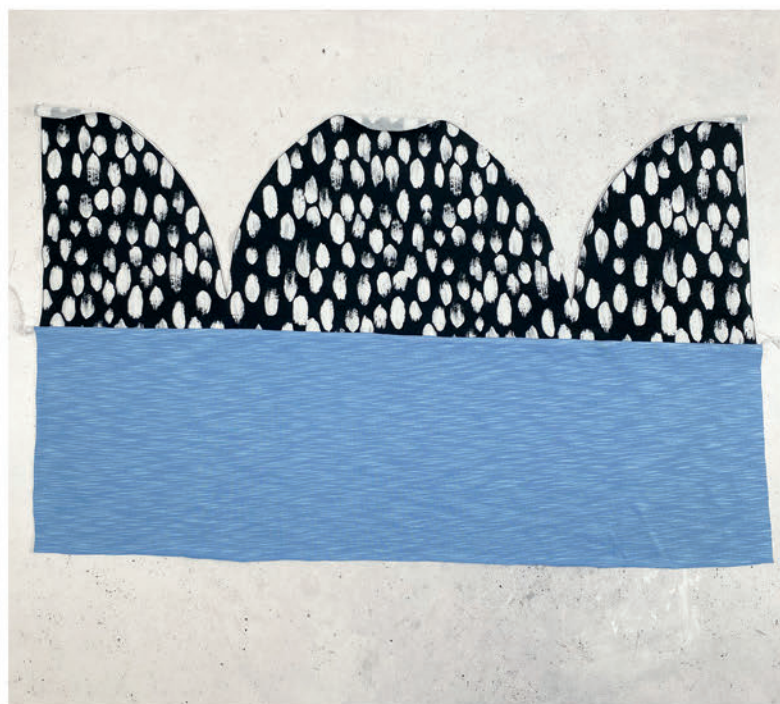
5. Take the outer piece of the brim and place it such that the lower edge (with the patch) is lined up with the lower edge of the lining upper piece.



6. Lay the pieces right sides together and secure with pins or clips.



7. Stitch the seam with a stretch stitch.



8. Repeat for the brim lining piece and the beanie outer piece.



# Beanie Party

BY CHERRY PICKING



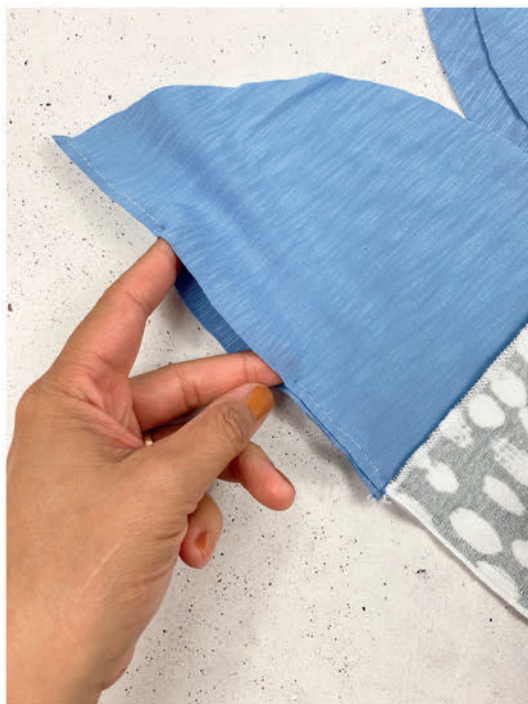
## 2. Beanie with turned brim and lining (Jersey)



9. Stitch the back seam of the piece with the upper outer and brim lining right sides together.



10. Stitch the back seam of the piece with the brim outer and the lining upper right sides together. Leave a small opening in the stitching line for turning.



11. Once the beanie is constructed, you may close this opening by hand with a blanket stitch, whip stitch or with a straight stitch on your machine.



12. Align the upper edges of one beanie piece together.



# Beanie Party

BY CHERRY PICKING



## 2. Beanie with turned brim and lining (Jersey)



13. Stitch the upper seam.



14. Repeat for the opposite beanie piece.



15. Lay one beanie piece inside the other fabric right sides together.



16. Stitch the two pieces together along the brim lower edge using an overedge stitch.



# Beanie Party

BY CHERRY PICKING



## 2. Beanie with turned brim and lining (Jersey)



17. Pull the beanie apart as illustrated.



18. Turn the beanie right side out.



19. Turn the beanie and arrange into the correct form. You may add a few stitches at the crown to secure the lining in place if desired.



20. Turn the brim up twice and you will see your patch. If you only turn the brim once, you will have a "plain" beanie.



# Beanie Party

BY CHERRY PICKING



## 3. Reversible Beanie using 2 Panels



1. Cut two beanie pieces. Mark and cut the brim pieces away from the crown pieces.



2. Place the patches on the brim pieces as described above 1.5 cm from the edge.



3. Here, I will demonstrate how you add four patches. Always place the patches 1.5 cm away from the edges.



4. Stitch the brim pieces to the crown pieces. Make sure the patches are upside down in relation to the crown pieces.



# Beanie Party

BY CHERRY PICKING



## 3. Reversible Beanie using 2 Panels



5. Stitch the back seam of the beanie outer piece right sides together using an overedge stitch. Repeat for the lining piece. Leave a small opening for turning in the back seam of the lining piece. Stitch the top seams.



6. Here you see a very small 3 cm opening. This is large enough for turning.



6. Insert the beanie inner into the beanie outer right sides together.



7. Align the back seams and close the bottom edge using an overedge stitch.



# Beanie Party

BY CHERRY PICKING



## 3. Reversible Beanie using 2 Panels



8. Turn the beanie right side out and close the opening.



9. This is how your work will look before putting it into its correct form. All done!

