

SEWING INSTRUCTIONS



CONTENTS

INTRODUCTION	Page 3
IMPORTANT NOTES	Page 4
REVERSIBLE BACKPACK INSTRUCTIONS	Page 5-6
HYDRATION BOTTLE SLEEVE INSTRUCTIONS	Page 7-8
ROLL UP UTENSIL CASE INSTRUCTIONS	Page 9
CELL PHONE / EYEGLOSS SOFT CASE INSTRUCTIONS	Page 10
KEY FOB WRISTLET INSTRUCTIONS	Page 11

EINLEITUNG

Hello dear friends,

First of all, I want to extend a GREAT BIG THANK YOU for your purchase of the Softshell DIY set. I want you have a lot of fun with the projects and hope you will enjoy making them as much as I do.

Please be sure to read all of the instructions before you start sewing.

I would love it if you shared your finished work online. Tag me in your post on Facebook and Instagram, and I will be sure to see your work! 😊

www.facebook.com/lyckligdesign

Instagram: @lyckligdesign

Enjoy!



© Lycklig Design. This DIY set was designed with a great attention to detail and is copyright of Lycklig Design (Berit Winter).

The DIY set may be used in the private sector and for the production of small batches. Commercial mass production is prohibited. The user is expressly advised to use these instructions at his/her own risk. Neither Lycklig Design nor anyone connected to Lycklig Design can be responsible for use of the information contained within, and neither will accept any liability for possible errors and/or omissions.

© Lycklig Design (Berit Winter)

IMPORTANT

NOTIONS

The following notions are required for completing the Softshell DIY projects:

Reversible backpack

- 3 m cord, e.g. 9 mm three-strand cord to go with the nautical look
- 8 grommets to fit your cord, e.g. 11 mm

Bottle Sleeve

- 1 m cord, e.g. 5 mm and 1 cord stopper (optional)

Roll Up Utensil Case

- 1 m ribbon or cord for tying, e.g. 5 mm
- 2 m double fold bias tape (optional)

Key Fob Wristlet

- 25 mm key fob hardware

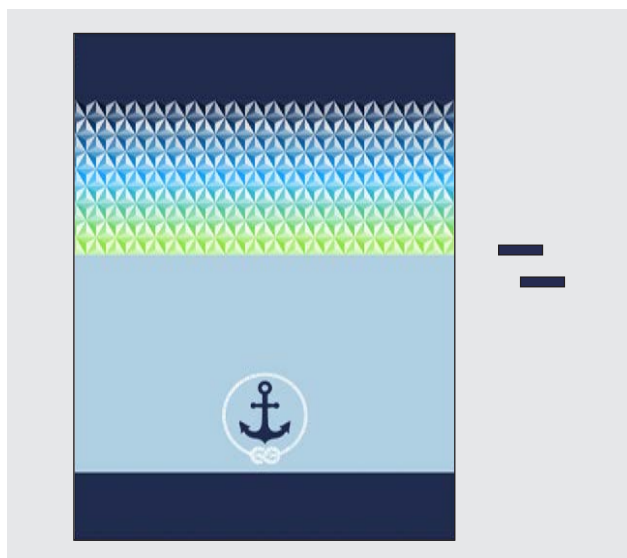
IS THE SEAM ALLOWANCE INCLUDED IN THE PATTERN?

YES - All pieces include a 7 mm seam allowance. You do not need to add an additional seam allowance. All pieces will fit perfectly together as printed on the panel.

PINS OR CLIPS?

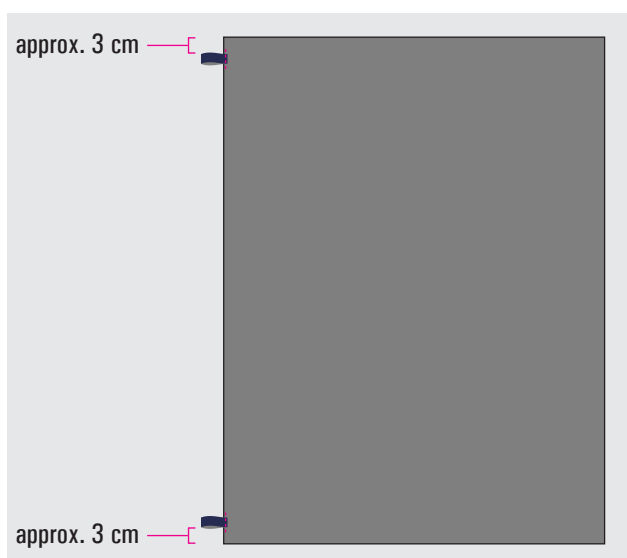
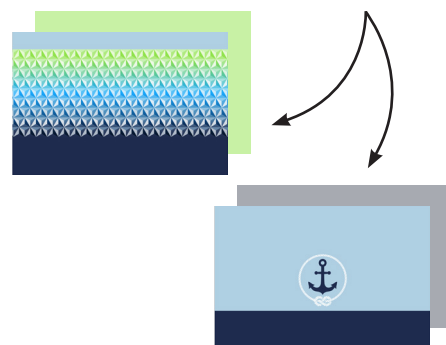
Use clips instead of sewing pins to secure the pieces as you work, as pins will leave visible holes in the softshell material.

REVERSIBLE BACKPACK INSTRUCTIONS



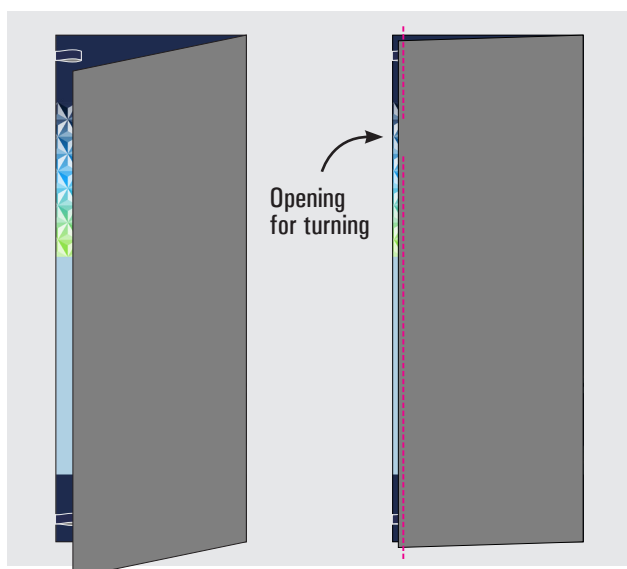
1

Cut the rectangular backpack piece and the loop pieces.



2

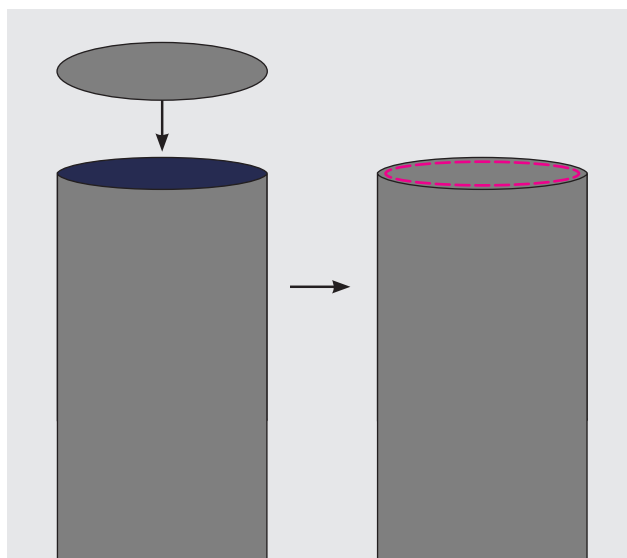
Fold the loop pieces in half and secure 3 cm from the top and bottom edges of backpack along the back seam.



3

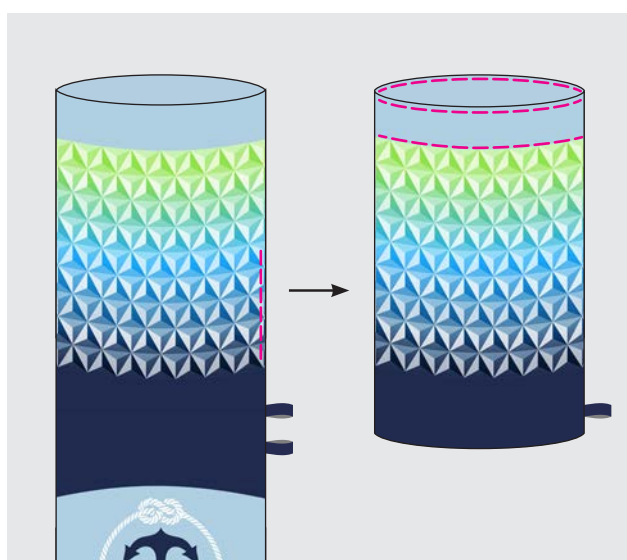
Fold the backpack piece in half lengthwise right sides together and stitch the back seam, catching the loops in your stitching line. Leave a small opening for turning in this stitching line.

REVERSIBLE BACKPACK INSTRUCTIONS



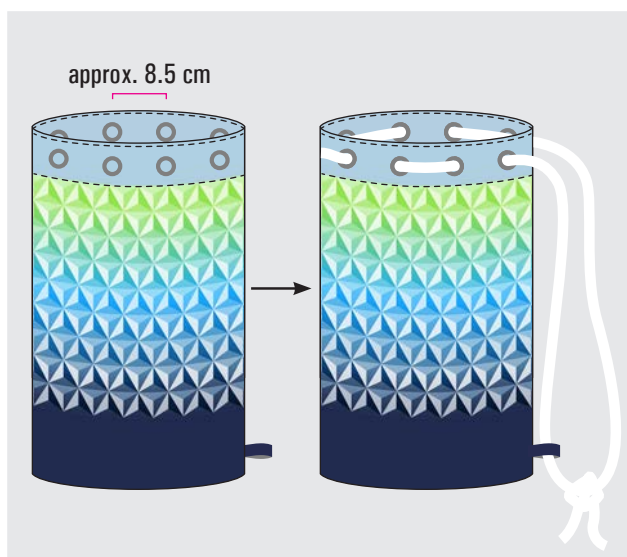
4

Stitch the bottom pieces to the ends of the tube of material you created in the previous step.



5

Turn the backpack right side out through the small opening. Close the opening with a few straight stitches or by hand. Stuff one backpack inside the other. Make sure that the inner backpack reaches down to the bottom. Press the upper edge and edge stitch the top edge. Topstitch a line at the bottom of the grommet band.



6

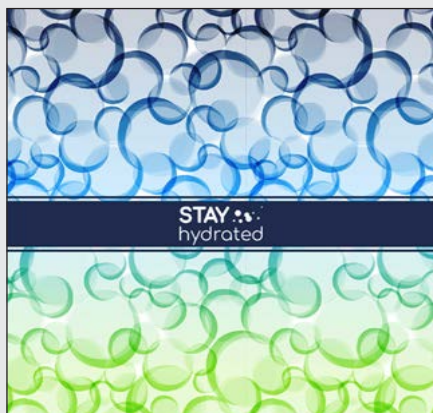
Mark and set your grommets along the upper edge at approximate 8.5 cm intervals. Measure the placement yourself and adjust so that your grommets are evenly spaced along the top edge.

Thread your cord through the grommets and through the lower loops. Tie the ends of the cord together.

HYDRATION BOTTLE SLEEVE

1

Cut the rectangular sleeve piece and circular bottom piece.



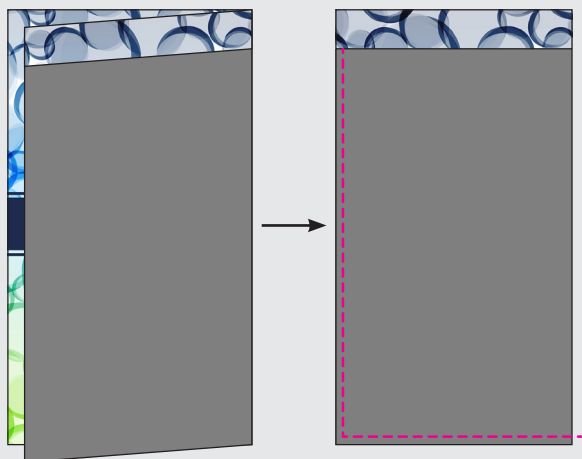
2

Fold the upper edge over 2 cm toward the wrong side and stitch in place to create a casing for the drawstring.

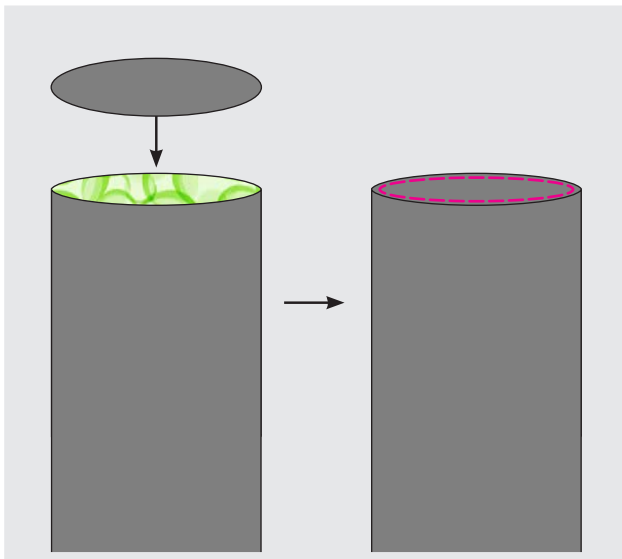


3

Place the side pieces right sides together and stitch up to the drawstring casing seam.



HYDRATION BOTTLE SLEEVE



4

Place the circle piece against the end of the resulting tunnel of fabric right sides together and stitch around the bottom seam.



5

Thread a drawstring through the casing and knot the ends.

INSTEAD OF SECURING
THE BOTTLE SLEEVE
WITH A BOW, YOU CAN
ALSO THREAD ON A
CORD STOPPER



ROLL UP UTENSIL CASE

1

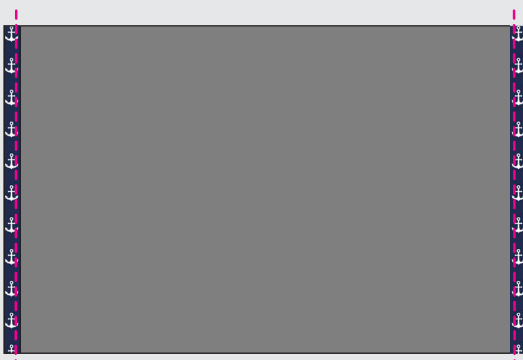
Cut the rectangle piece for the utensil case.



ALTERNATIVE TO
STEP 2: ENCASE
THE OUTER EDGE IN
BIAS TAPE.

2

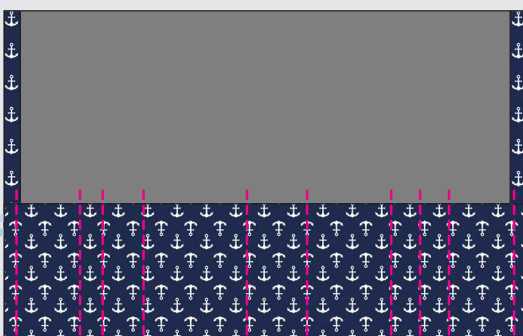
Fold the short edges 0.5 cm - 1 cm toward the fabric wrong side and stitch in place.



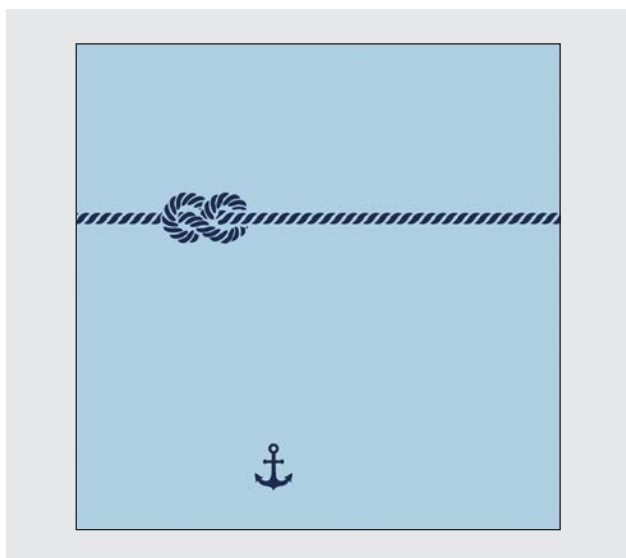
3

Fold one long edge 8 cm toward the wrong side and secure. Divide the ribbon in half and place the ribbons on one side of your work between the two layers. Stitch the pocket in place along both edges.

Mark and sew vertical lines at your desired spacing to create small pockets.

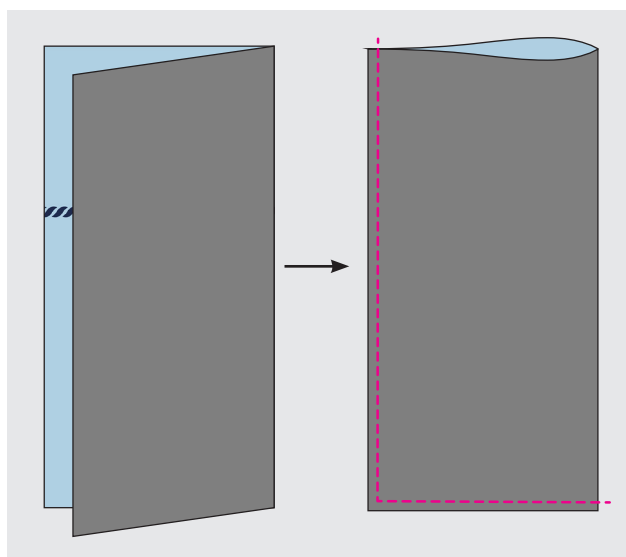


CELL PHONE / EYEGLASS SOFT CASE



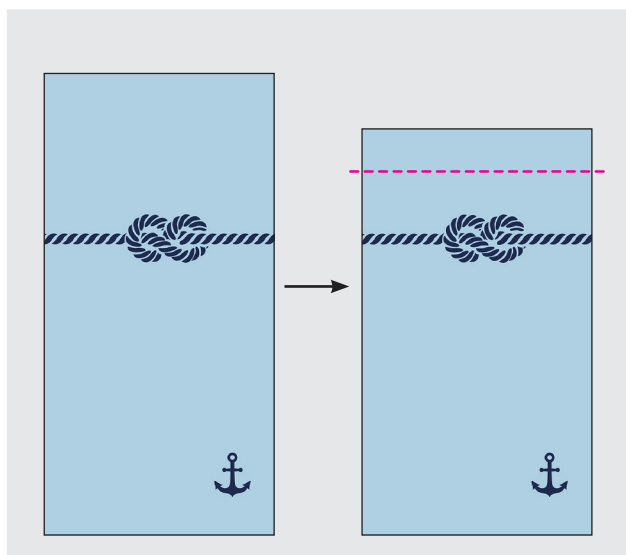
1

Cut the rectangular piece for the cell phone / eyeglass soft case.



2

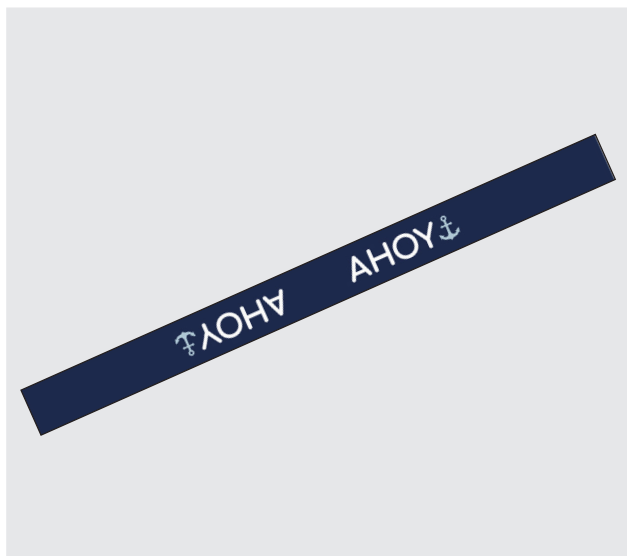
Fold the rectangle in half lengthwise. Stitch the lower seam and the side seam.



3

Turn the case right side out. Tuck the upper edge 2 cm toward the inside and secure. Topstitch in place.

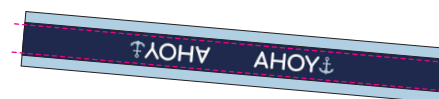
KEY FOB WRISTLET



1

Cut the rectangular piece for the key fob wristlet.

YOU CAN SEW THE RECTANGLE ONTO A WIDER WEBBING BEFORE STEP 2



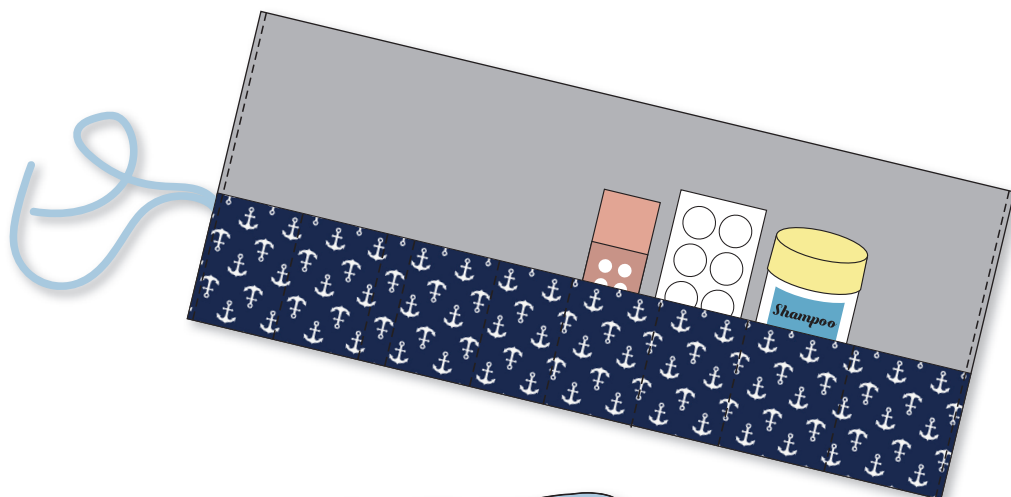
2

Fold the wristlet piece in half and stitch the two ends wrong sides together.



3

Attach your key fob hardware to the wristlet end securely with a pair of pliers.




ALL DONE!