

Happy Camping

STEINBECK
#NÄHENMITSTEINBECK



SEWING TUTORIAL & PATTERN PIECES

You will also need:

Cotton woven fabric -- 120 x 90 cm

Coated Cotton 40 x 50 cm

Lightweight fusible interfacing (e.g. Decovil light) 50 x 90 cm

Fusible high loft batting H640 40 x 90 cm

Elastic band 30 cm / 2 cm wide

Elastic band 2m / 1 cm wide

Cord 2 m / ø 3 mm

Cord 3 m / ø 5 mm

Satin ribbon 60cm / 1 cm wide

Webbing 60 cm / 3 cm wide

Cord stopper 1 piece

Double fold bias tape 2 - 4 m

Keyring 1 piece

Keyclip 2 pieces

Snap fasteners 5 pieces

Thin stick 1 x 20 cm / 1x 70 cm ø 5 - 10 mm

Optional:

Swafing Foil Vista or transparent outdoor tablecloth material 30 x 15 cm

Faux leather or sewable paper for applying the additional motifs

We hope you enjoy sewing these fun things to use on your next camping adventure!

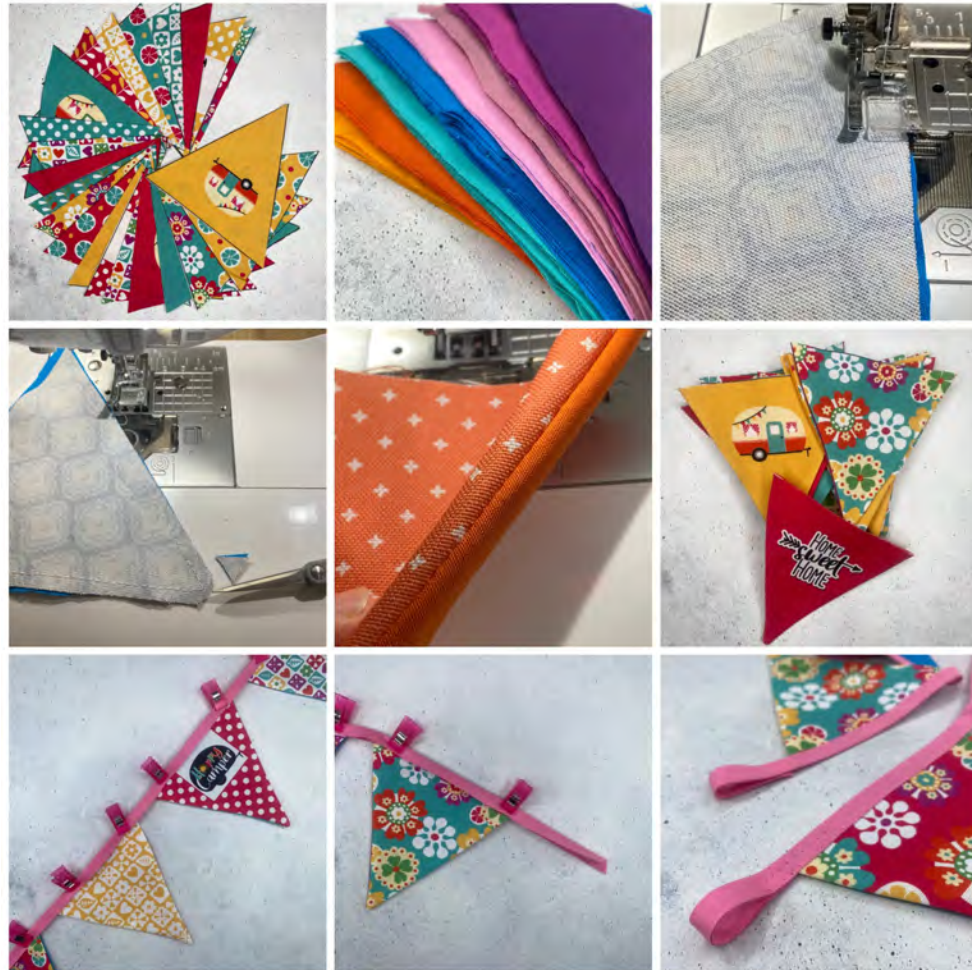
Tip:

Appliqué the large, round motifs on throw pillows, beach totes, beach towels or seat cushions.

The many smaller motifs can be used to make keyrings or to embellish hand towels or storage totes.

Pennant Bunting





Illustrations in sequence, left to right, starting from the top left, row by row:

- Cut out the pennant from the panel and cut out additional pennant pieces from woven fabric for the backing using the pattern piece found at end of these instructions.
- Sew the pennant piece and the backing right sides together. Use a seam allowance the approximate width of your presser foot, which should be about 0,75 cm.
- Leave the upper edge open.
- Trim and notch the tips of each pennant for a smooth turn.
- Turn the pennants right side out and press.
- Place the pennants between the fold of the double fold bias tape, distributing evenly as desired, and secure with pins or clips. Leave some bias tape at each to create loops.
- Topstitch the entire pennant chain with a straight or zigzag stitch. Fold the end loops and stitch.

Decorative Pennant





Illustrations in sequence, left to right, starting from the top left, row by row:

- Cut out the decorative pennant piece from the panel. Cut a piece from cotton woven fabric for the backing using the pattern at the end of these instructions.
- Sew the pennant piece to the backing right sides together most of the way around. Use a 0,75 cm seam allowance.
- Leave a small opening for turning in the center of the upper pennant edge (see illustration top left).
- Trim and notch the corners for a smooth turn.
- Turn the pennant right side out and press. Press the edges of the opening toward the inside.
- Topstitch all the way around as desired.
- Fold the upper part of the pennant toward the back to make a tunnel. Take a moment to check whether your wooden stick or dowel will fit through the tunnel. Stitch the tunnel seam and secure with backstitching.
- Tie 1 m of round cord (Ø 3 mm) to the stick for hanging and embellish with additional trims, trinkets and tassels as desired (see image bottom right).

Jewelry Storage





Illustrations in sequence, left to right, starting from the top left, row by row:

- Cut the jewelry storage drawstring bag pieces from the panel. Cut backing pieces from cotton woven fabric using the pattern pieces at the end of these instructions.
- Sew the bag pieces to the backing pieces right sides together. Use a 0,75 cm seam allowance. Leave an opening of approximately 5 cm for turning.
- Notch the edges for a smooth turn. Turn your pieces right side out and press.

- Topstitch the small circle around the edge. Close the turning opening in this stitching line.
- Topstitch around the large circle piece approximately 1 to 1.5 cm from the edge. This will create a circular tunnel for your drawstring around the outer edge.



Illustrations in sequence, left to right, starting from the top left, row by row:

- In the upper left image, you will see the turning opening. Do not stitch this opening closed.
- Place the small circle directly in the middle of the large circle and secure with pins.
- Stitch the smaller circle to the larger circle along the quarter lines between the different prints (see lower left image).
- Thread 60 cm of satin ribbon through the tunnel using a safety pin or bodkin.
- Thread both ends of the satin ribbon through a cord stopper. Heat seal the ribbon ends against raveling and knot the ends.
- If the turning opening through which you have threaded the drawstring is too large, we recommend making the turning opening smaller by hand with a few small mattress stitches (see image lower right).
- The opening should allow for some play of the drawstring, but not too much.
- Trim any hanging threads, cinch closed and you're all done!

Shower Token Bag





Illustrations in sequence, left to right, starting from the top left, row by row:

- Cut the shower token bag pieces from the panel.
- Fold in half wrong side out, so that the two points are aligned.
- Stitch the two halves together along the edge. Use a 0,75 cm seam allowance.
- Leave an opening for turning on one side. See pin markings in the top row center image.
- Trim and notch the point and corners for a smooth turn.
- Turn the token bag right side out and press. Insert a piece of ribbon formed into a loop in the opening.
- Stitch the turning opening closed, catching the loop in your stitching line.
- Thread the key ring through the loop and set a snap closure.

All done!

Key Chain





Illustrations in sequence, left to right, starting from the top left, row by row:

- Cut the keychain piece from the panel.
 - Optional: Use the panel piece as a pattern to cut a piece of thin fusible poly batting (e.g. H640) the same size and fuse it onto the back of the keychain piece for a more voluminous keychain.
 - Embellish the keychain piece as you like. (Important: Make sure you can still turn the keychain with whatever embellishments you attach.)
 - Align the two long edges right sides together and stitch at a 0,75 cm seam allowance. Do not stitch the narrow ends closed.
 - Turn the keychain piece right side out with the aid of a stick.
 - Press your work. Insert the keychain piece ends into your key fob hardware. Clamp secure with pliers. Place a scrap of fabric between the pliers and your hardware to prevent scratching your hardware.
- All done!

Travel Folder





Illustrations in sequence, left to right, starting from the top left, row by row:

- Cut the travel folder inner and outer pieces from the panel. Use the folder outer piece (black arrow) as a pattern to cut an additional piece of woven fabric.
- Cut a piece of Swafing "Vista" see-through film 30 cm x 15 cm wide (dark blue arrow).
- Cut a piece of fusible lightweight interfacing (e.g. Decovil light) 2 cm shorter and narrower than the outer piece.
- Decide how you would like to divide up your travel folder, for example, what should be on the left or on the right.

- Fold the contrasting printed edges of the folder pieces towards the center twice and press the edge. Topstitch with a straight stitch (red and yellow arrows).
- You can either fold the edge of one long side of the see-through film over and topstitch, or encase one long edge with bias tape.
- Arrange the inner pocket pieces on the additional piece of woven fabric. Baste stitch the pieces in place along the outer edges.



- Fuse the interfacing to the center of the travel folder outer piece wrong side.
- Place the folder inner piece with pockets on the folder out piece right sides together and secure with pins or clips.



- Lay a piece of 2 cm wide braided flat elastic between the inner and outer layers approx. 2 cm from the edge of what will be the back of the folder (blue arrow image on left).
- You may also insert loop of elastic for holding a pen in the back folder edge.
- Stitch all layers together, catching the elastic in your stitching line. Stitch using a 0,75 cm seam allowance.
- Leave an opening for turning on one of the long sides. Trim and notch the corners for a smooth turn. Turn your work right side out.
- Press your work. Close the turning opening with a straight stitch.

All done!

Cutlery Roll-Up





Illustrations in sequence, left to right, starting from the top left, row by row:

- Cut the cutlery roll-up piece from the panel. Cut a piece of thin fusible poly batting (e.g. H640) and a piece of woven fabric the same size as the roll-up piece.
- Fuse the batting onto roll-up piece from the panel. Lay this piece onto the additional piece of woven fabric and secure with pins or clips.
- Stitch all around, leaving a small opening for turning (see image top row right).
- Trim and notch the corners. Turn right side out and press.
- Fold the cutlery pockets section up toward the inside. Topstitch the individual compartments as marked. Stitch the right hand outer edge with a straight stitch.
- Insert 1 m of 1 cm flat braided elastic band folded in half into the turning opening. (see image lower left)
- Topstitch this edge, securing the end pocket and catching the elastic in your stitching line.



- Fold the upper edge 3 cm toward the roll-up inside and press.
- Set snap closures at the right and left edges to hold this folded edge in place (see bottom right image on previous page).
- Roll the cutlery roll-up and secure the roll by tying the elastic.

All done!

Organizer





Illustrations in sequence, left to right, starting from the top left, row by row:

- Cut all pieces of the organizer from the panel. Use the back piece as a pattern to cut an additional piece of woven fabric for the backing. Cut a piece of Lightweight fusible interfacing (e.g. Decovil light) 2 cm narrower and shorter than the organizer back piece.
- Repeat the following for all compartment pieces: Press the two side edges and the lower edge 1 cm toward the wrong side. Press the top edge 1 cm over twice. Topstitch the top pocket edge.

- Press the Lightweight fusible interfacing to the center of the back piece. Lay the organizer back piece on the backing piece right sides together and secure with pins or clips. Stitch all the way around, leaving an opening for approx. 15 cm wide along the top edge. Trim and notch the corners for a smooth turn. Turn your work right side out and press.
- Fold the upper edge approx. 5 cm toward the back and secure with pins. Stitch the tunnel through which the stick or wooden dowel will be fed.

Happy Camping



Illustrations in sequence, left to right, starting from the top left, row by row:

- Arrange all storage pocket pieces on the back piece to your liking. Secure with pins, basting tape or basting spray.
- Stitch the pockets to the back piece with straight stitch.
- You can partially overlap the pockets, if you like.
- You can also subdivide the individual pockets by topstitching a vertical line (image upper right).
- Insert the stick or wooden dowel into the tunnel.
- Tie a length of cord to the ends of the stick for hanging.

TIP: You can also hang the organizer on a curtain rod.

All done!

Gym Bag / Mini Backpack

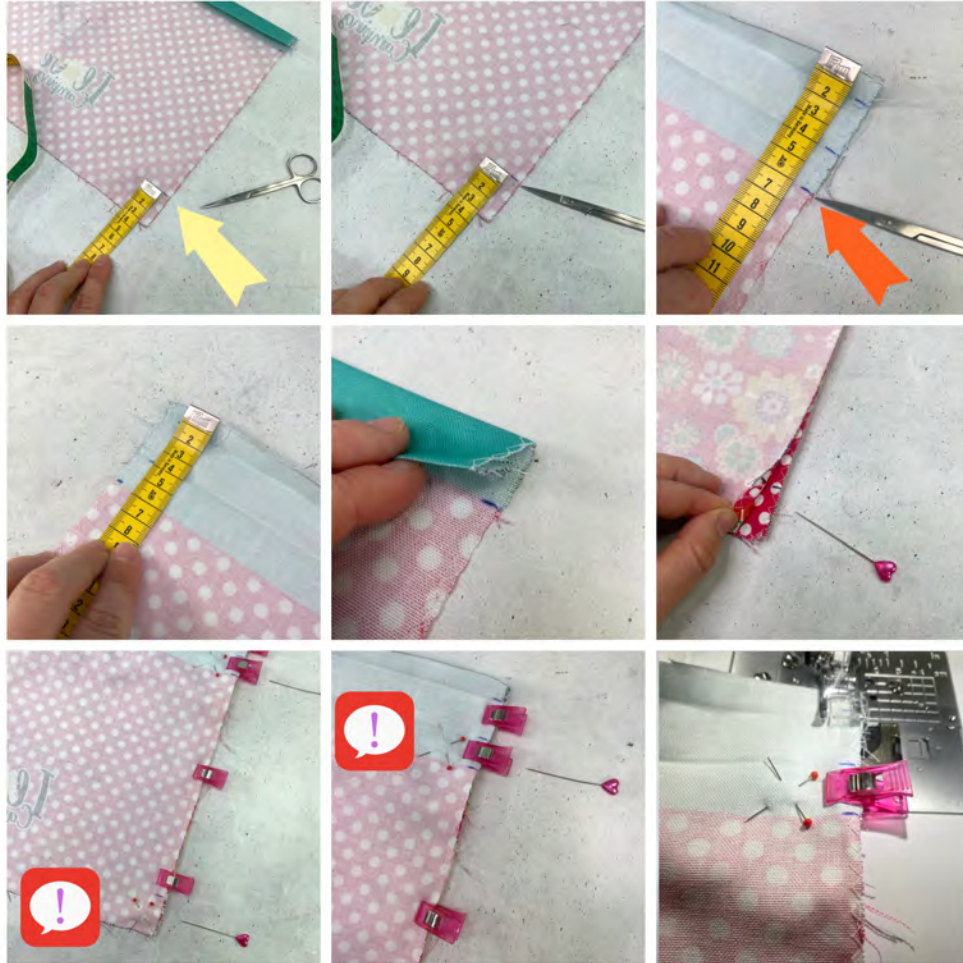




Illustrations in sequence, left to right, starting from the top left, row by row:

- Cut out both pieces of the gym bag from the panel. Finish the edges with an overcast stitch (image top right, red arrow)
- Embellish the two gym bag pieces with trims or appliqués as you like.
- Mark at 1 cm and 4 cm from the top edge. Fold the edge over at the marks and press (black arrows).

Your work will now look like the pieces in the image lower right.



Illustrations in sequence, left to right, starting from the top left, row by row:

- Transfer the marks printed on the pieces 3 cm from the lower edge and 6 cm from the upper edge to the fabric wrong side. (See image upper right: Now you have three marks at the top with the previously set marks at a distance of 1 cm, 4 cm and 6 cm from the upper edge!).
- Transfer these to the left and right sides of both pattern pieces at the top and bottom.
- Place the two pieces right sides together and stitch using a 0,75 cm seam allowance.
- **Do not** stitch lower three centimeters. **Do not** stitch between the 4 cm and 6 cm markings.

The lower edge remains open.



Illustrations in sequence, left to right, starting from the top left, row by row:

- Press the seam allowances open (yellow arrow) and turn your work right side out.
- In two side seams there are now 2 cm open gaps. Topstitch around these gaps in the seam so that they look like a buttonhole (orange arrow).
- Topstitch the upper, twice folded edge of the gym bag all the way around (blue arrow).



Illustrations in sequence, left to right, starting from the top left, row by row:

- You will need two length of round 5 mm cords measuring 1.50 m each. With the aid of a safety pin or bodkin, thread one length of cord through one top tunnel, and the other length of cord through the opposite tunnel (image top center and top right pink arrows).
- Turn the gym bag inside out. Insert the cord ends into the bag and through the open gaps in the side seams (center image, yellow arrow).
- Stitch the openings closed catching the cord in your stitching line (images bottom left and center, black arrows). Trim any excess cord. Turn your work right side out.

All done!

Clothespin Bag





Illustrations in sequence, left to right, starting from the top left, row by row:

- Cut the two clothespin bag pieces from the panel as well as four additional pieces of oilcloth (pattern piece at the end of these instructions).
- Lay two oilcloth pieces right sides together. Stitch the lower seam and the two side seams. Leave a small opening for turning in one of the side seams (red arrow).
- Lay two outer pieces from the panel right sides together. Stitch the lower seam and two side seams (image upper left).
- Pull the two halves away from each other and align the bottom seam edges (top row center image).
- Insert the oilcloth lining into the outer fabric right sides together. align the seams. Insert two pieces of webbing between the inner and outer layers. Stitch the top seam, catching the webbing in your stitching line.

- Pull the lining and the outer apart. Turn your work right side out through the turning opening. Close the turning opening with a few straight stitches.
 - Insert the lining into the outer. Press and topstitch the upper edge. Set the snap closures on the webbing.
- All done!

Spare Change Purse





Illustrations in sequence, left to right, starting from the top left, row by row:

- Both the spare change purse pieces from the panel. Use one piece as a pattern to cut two additional pieces from a coordinating woven fabric.
- Stitch the two lining pieces right sides together along the sides and rounded lower edge with a 0,75 cm seam allowance (red arrow, top left image).
- Lay the spare change purse pieces right sides together and stitch along the sides and rounded lower edge with a 0,75 cm seam allowance, leaving a gap in your stitching line between the markings (blue arrow).
- Notch the seam allowance along the curve for a smooth turn.
- Press the side seam allowances open.



Illustrations in sequence, left to right, starting from the top left, row by row:

- Insert the purse outer into the lining right sides together and secure with pins or clips (yellow arrow, top center image).
- Stitch along the top seam with a 0,75 cm seam allowance (orange arrow, top right image).
- Pull the lining and the outer apart and turn your work right side out through the opening.
- Close the turning opening with a few straight stitches (black arrow, center right image).
- Reinsert the lining into the outer and press your work.
- Topstitch on two lines around the top of the bag: Stitch one line at the level of the black marking and a second line right along the break in the printed design (white arrows, bottom center image and bottom right image).

See also images on the following page (yellow arrows).



Illustrations in sequence, left to right, starting from the top left, row by row:

- Stitch the two lines as described above (yellow arrows, upper left image, top center image).
 - Cut two pieces of 3 mm round cord approx. 50 cm long.
 - With the aid of a safety pin or bodkin, starting on the left, draw the first piece of cord through one tunnel and then draw that same piece of cord through the opposite tunnel and out again to the left side (top right image, orange arrow)
 - Now from the right, draw the other length of cord through one tunnel and then draw that same piece of cord through the opposite tunnel and out again to the right side.
 - Tie the two right cord ends together and tie the left two cord ends together.
 - Pull both drawstring knots to close the bag!
- All done!

Sleeping Mask



Illustrations in sequence, left to right, starting from the top left, row by row:



- Cut the sleeping mask pieces from the panel. Cut lining pieces from a woven fabric (pattern at the end of these instructions). Cut a piece of thin fusible poly batting (e.g. H640) using the mask pattern piece.
- Fuse the poly batting to the back of mask pieces from the panel (orange arrow, top center image).
- Cut a length of elastic to fit the head. The elastic should be cut to a length to stretch somewhat for a snug (but not too tight!) fit.
- Lay the mask front onto the lining piece right sides together and position the elastic band in between the two layers (green arrow, center image). Secure with pins or clips.
- Stitch around the mask catching the elastic in your stitching line. Leave a small opening for turning along the top edge (yellow arrow, lower center images).

- Notch and clip the seam allowance along the curves. Turn your work right side out. Close the turning opening with a few hand stitches or by machine. All done!




Brötchengeldbeutel / Spare change purse

20x20
mm

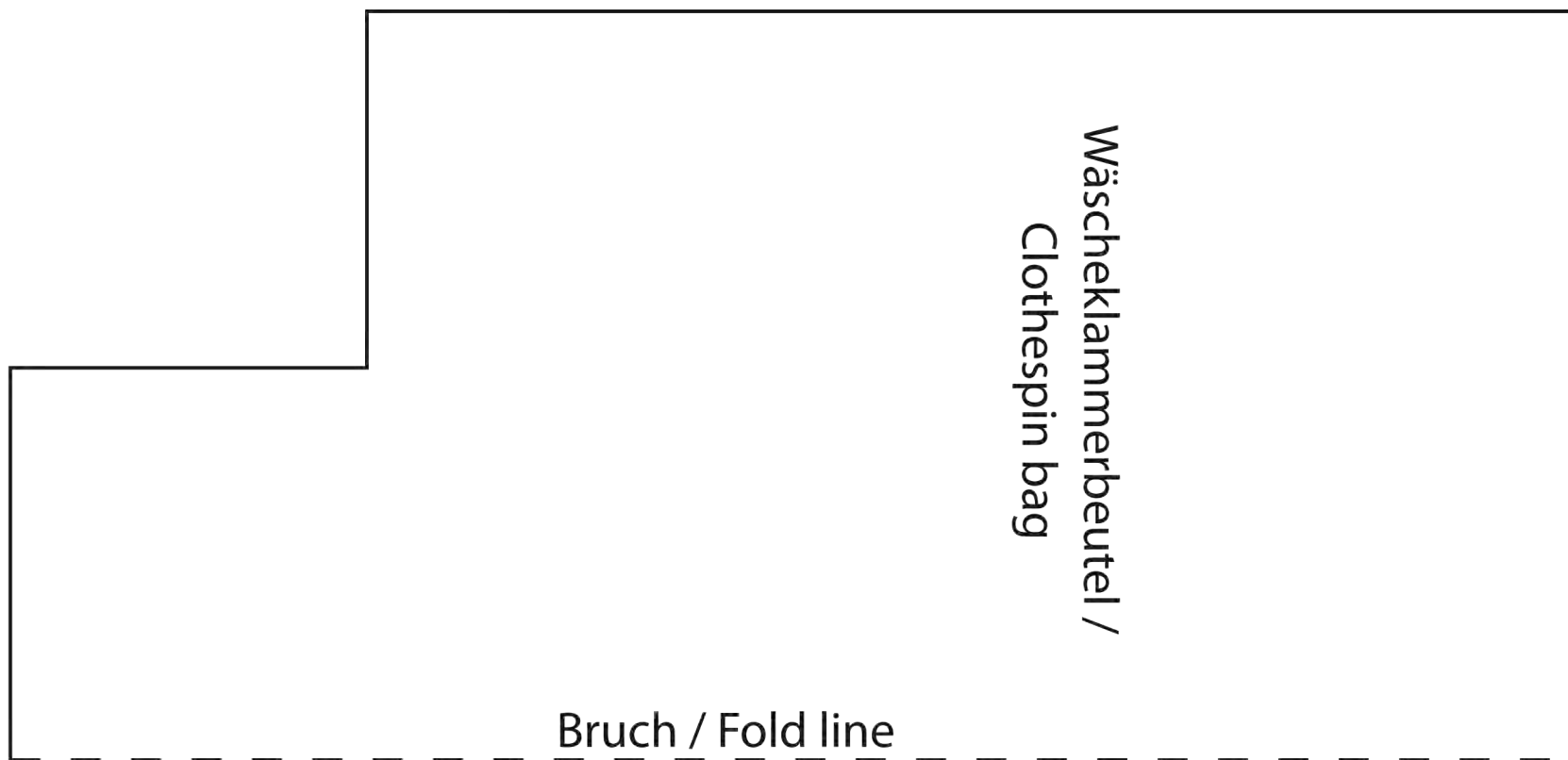
Deko-Wimpel / Decorative pennant

20x20
mm

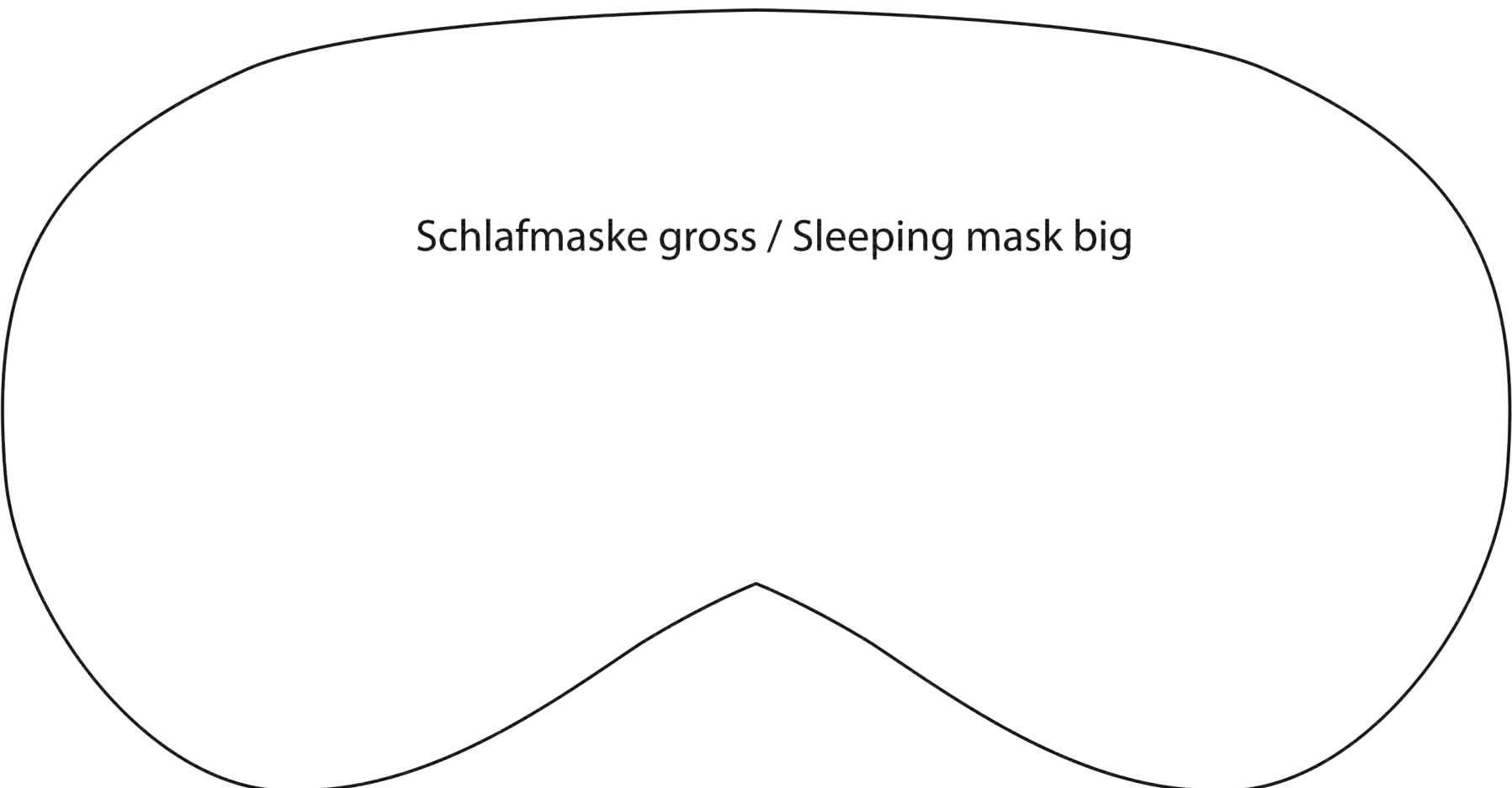


Duschmarkentasche / Shower token bag

20x20
mm



20x20
mm



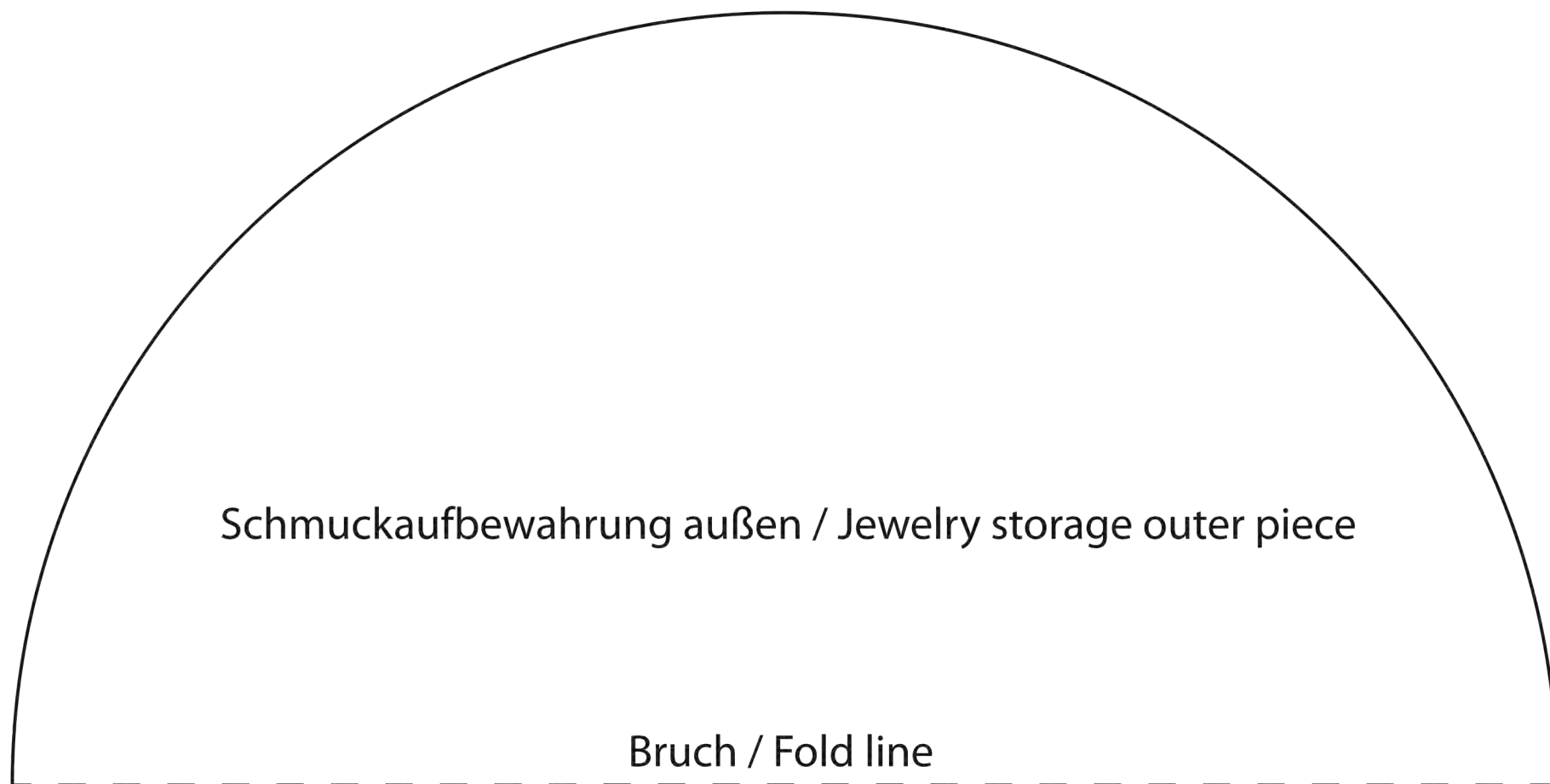
Schlafmaske gross / Sleeping mask big

20x20
mm

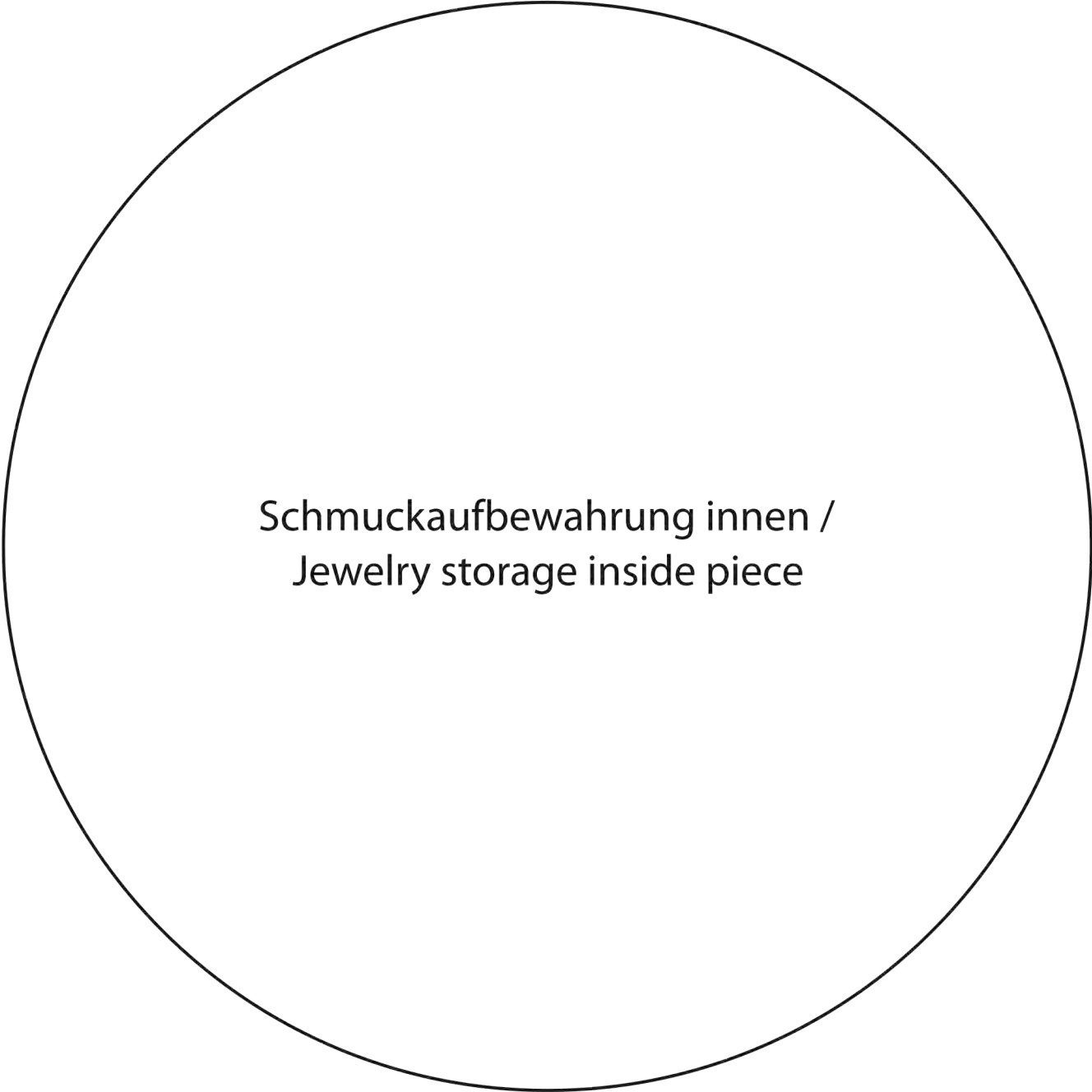


Schlafmaske klein / Sleeping mask small

20x20
mm



20x20
mm



Schmuckaufbewahrung innen /
Jewelry storage inside piece

20x20
mm



Wimpel für Wimpelkette /
Pennant for bunting

20x20
mm