

HAPPY PATCHWORK BLANKET INSTRUCTIONS



CONTENTS

| | |
|---|------------|
| INTRODUCTION | Page 3 |
| IMPORTANT INFORMATION | Page 4 |
| SEWING INSTRUCTIONS QUILT WITHOUT BORDER | Page 5-8 |
| SEWING INSTRUCTIONS QUILT WITH BORDER | Page 9-13 |
| SEWING INSTRUCTIONS BEDDING | Page 14-17 |
| SEWING INSTRUCTIONS DRAWSTRING BACKPACK | Page 18-21 |
| SEWING INSTRUCTIONS COSMETICS BAG | Page 22-24 |

INTRODUCTION

Hello sewing friends!

First of all, a **HUGE THANK YOU** for purchasing the Happy Pillow DIY. I hope you enjoy it and I hope you like it as much as I do. Be sure to read through the instructions **before sewing**.

Up to six throw pillows or three shopping totes can be sewn from one Happy Pillow DIY panel. You can either sew square throw pillows (40 x 40 cm) or round pillows (diameter 40 cm) from the pieces. Enough material is included for making piping to edge up to four pillows. These same strips of material are used to make the handles on the shopping totes.

Please also share with me your finished work posted on social media! Please tag me in your Facebook and Instagram posts, where I'm guaranteed to see it! 😊

www.facebook.com/lyckligdesign

Instagram: @lyckligdesign

Enjoy!

Sincerely yours,

Berit

© Lycklig Design. All Rights Reserved. This HAPPY PATHWORK BLANKET was designed with great attention to detail.

The HAPPY PATHWORK BLANKET is intended for private, home sewing use only. Mass production is prohibited. User discretion is advised. It is expressly understood that the author, designer and affiliates make no warrants as to accuracy in the instructions and shall assume no liability whatsoever for possible errors and/or omissions in the instructions.

IMPORTANT INFORMATION

MATERIAL LIST

The following ingredients are required depending on the desired project:

Patchwork Quilt

Depending on the desired size, the blanket can be sewn in different sizes e.g.:

Patchwork Quilt approx. 1,32 x 1,62 m

- 11 rows of 9 squares Happy Patchwork Blanket (approx. 1,65 m)
- approx. 1,7 m of matching woven fabrics, e.g. Swafing's „Heide“
- approx. 1,65 m Volume fleece batting 295

Patchwork Quilt approx. 1,62x1,92 m (with Border)

- 11 rows of 9 squares Happy Patchwork Blanket (approx. 1,65 m)
- approx. 3,35 m of matching woven fabrics, e.g. Swafing's „Heide“
- approx. 3,3 m Volume fleece batting 295

Bedding (135 x 200 cm)

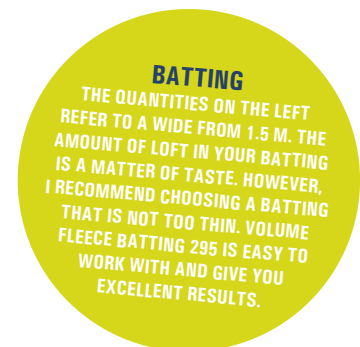
- 12 rows of 9 squares Happy Patchwork Blanket (approx. 1,8 m)
- 3,4 m matching woven fabric, e.g. Swafing's „Heide“
(3 m if only the reverse sides are going to be made the combining fabric.)
- Snaps or pieces of ribbon

Drawstring Backpack

- 3 rows of 3 squares Happy Patchwork Blanket (approx. 0,45 m)
- approx. 0,45 m woven combination fabric, e.g. Swafing's „Heide“
- 1,5-2 m Cord
- 2 grommets or fabric for making loops
- Stabilizing interfacing (optional)

Cosmetics Bag

- 2 squares from the Happy Patchwork Blanket
- 15 cm combination fabric made of woven goods, e.g. heather
- 15 cm batting
- Zipper 32 cm
- 4 strips approx. 2.5 x 4 cm made of imitation leather or similar
- approx. 95 cm cord (for shoulder bag)



SEWING INSTRUCTIONS QUILT - WITHOUT BORDER

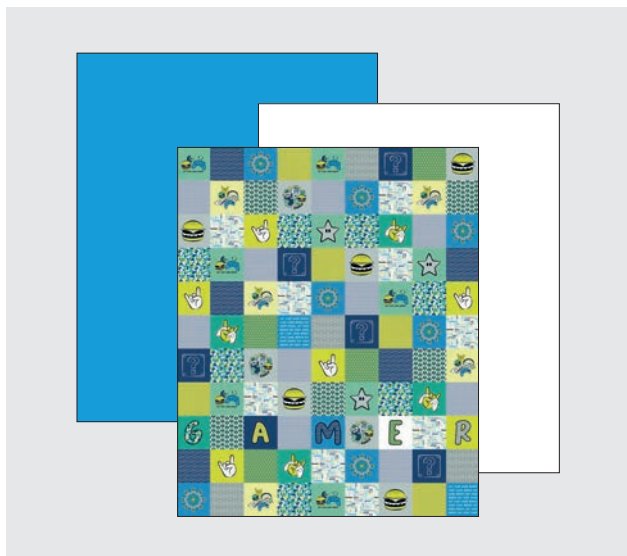
1

Cut the Happy Patchwork Blanket quilt front, the backing, and the batting to the desired size, for example:

Happy Patchwork Blanket: 11 rows of 9 squares

Backing: ca. W 135 x H 165 cm

Volume fleece batting: W 133 x H 163 cm



2

Press the quilt front and backing.



3

Stitch the quilt back to the quilt front right sides together. Leave an opening for turning.

Secure each stitching line with a few backstitches.

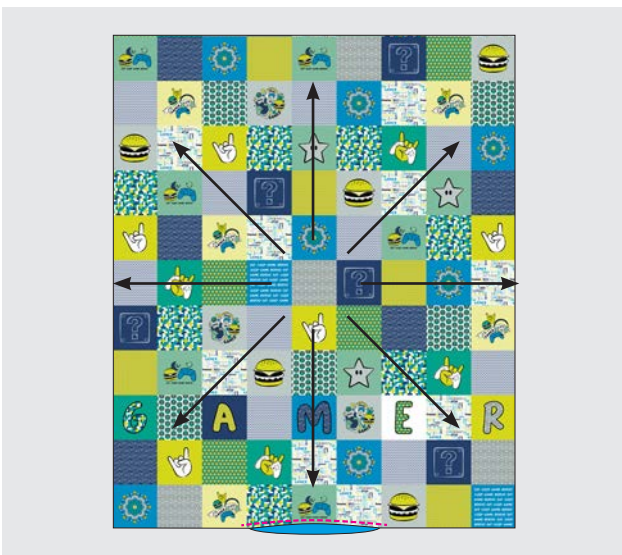
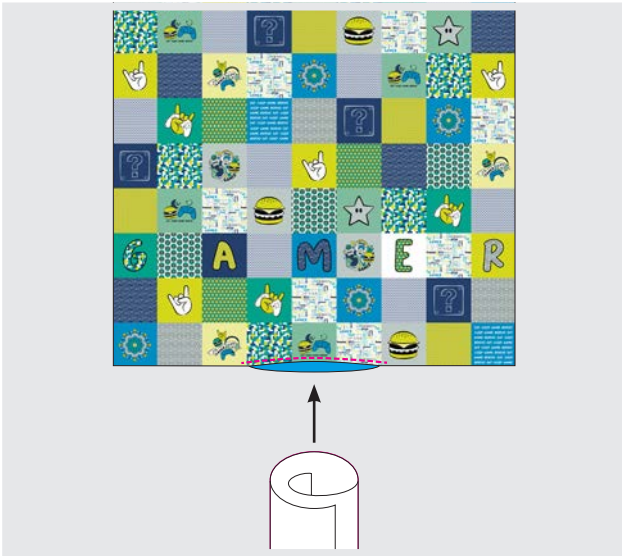


SEWING INSTRUCTIONS QUILT - WITHOUT BORDER

4

Turn your work right side out. Roll your batting and insert inside the quilt through the opening.

Unroll the batting and align the corners of the batting into the quilt corners. Smooth the quilt with your hands so that the batting lays nicely. Close the turning opening by hand using a ladder stitch.



5

To prevent the layers from shifting during sewing, pin the layers together with quilting curved safety pins or long straight pins. You may also baste the layers together with long basting stitches to be removed later.



"QUILTING" IS THE PRACTICE OF JOINING TOGETHER LAYERS OF MATERIAL AND BATTING WITH LINES OF STITCHING.

SEWING INSTRUCTIONS QUILT - WITHOUT BORDER

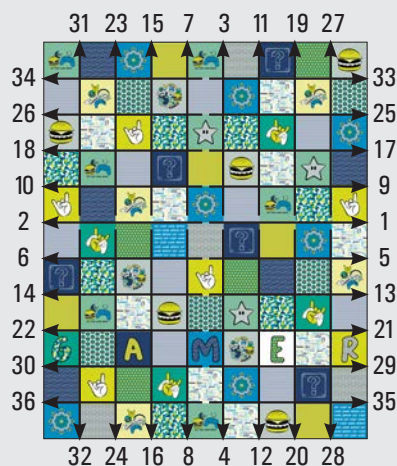


6

Start quilting the blanket. I prefer to set the stitch length somewhat longer (3.5 mm).

It can be difficult to fit the bulk of the blanket beneath the arm of your machine. Instead of bunching, roll your work to fit.

Method A



You may quilt the layers together a couple of different ways:

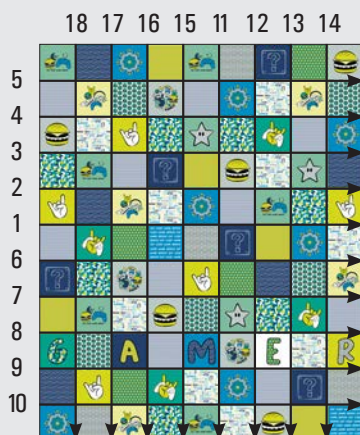
Method A

Begin quilting with a stitching line in the exact center of your blanket. Please see the illustration for the sequence of the following stitching lines.

Be sure to secure each stitching line with a few backstitches.

TO KEEP THE LAYERS ALIGNED, PRACTICE TAUT SEWING BY HOLDING YOUR WORK BEHIND THE NEEDLY FIRMLY AND GUIDING THE MATERIAL GENTLY UNDER THE NEEDLE WHILE SEWING WITHOUT PULLING. OR USE A WALKING FOOT.

Method B



Method B

Begin quilting with a stitching line in the exact center of your blanket. Turn your work 90 degrees and stitch the next stitching line down the middle of the blanket. Turn your work again 90 degrees and stitch a line to the left of first stitching line. Repeat for each stitching line, switching to the left and right of the line stitched before.

Be sure to secure each stitching line with a few backstitches.

SEWING INSTRUCTIONS QUILT - WITHOUT BORDER



✿
ALL DONE

SEWING INSTRUCTIONS QUILT - WITH BORDER

1

Cut the piece of Happy Patchwork Blanket, the backing piece, and the border piece to the desired size, for example:

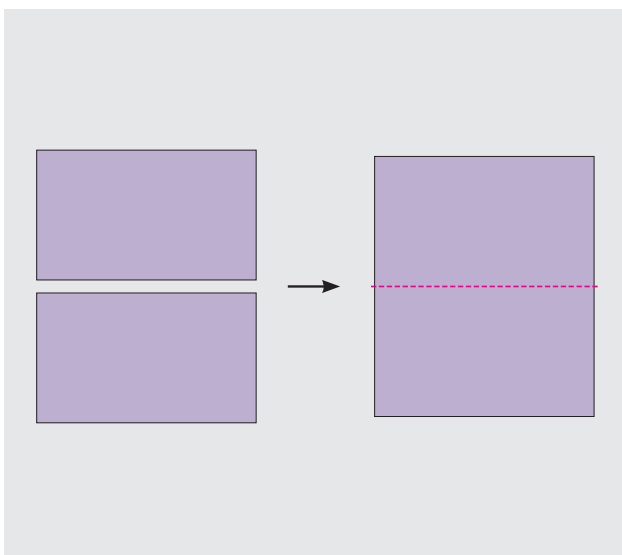
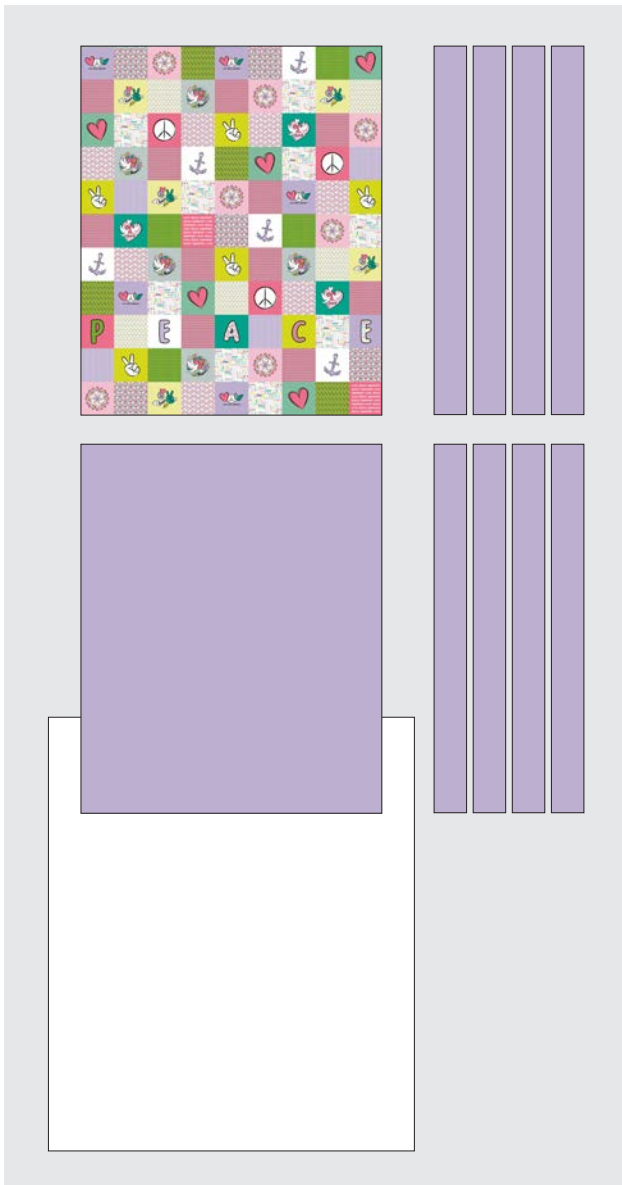
Happy Patchwork Blanket: 11 rows of 9 squares

Front Border: 4 x pieces, W 15 x H 165 cm each

Backing: W 135 x H 165 cm

Backing Border: 4 x pieces, W 15 x H 165 cm each

Volume fleece batting: W 163 x H 193 cm



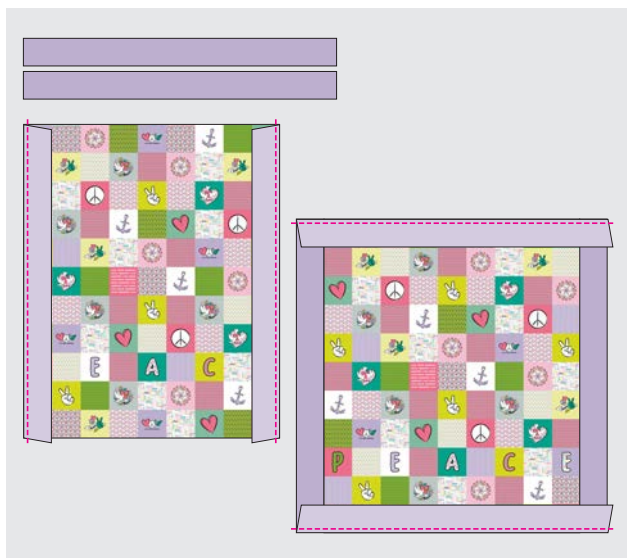
The back can also consist of 2 stripes

W 165 x H 100 cm each. The frame on the back is omitted.

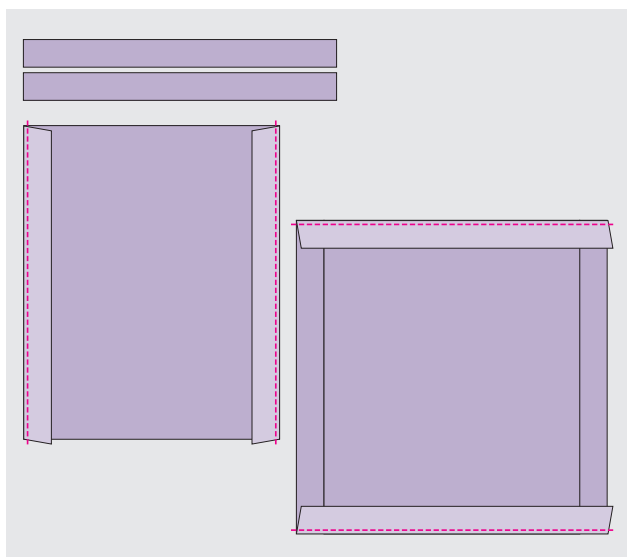
SEWING INSTRUCTIONS QUILT - WITH BORDER

2

Stitch the four border pieces to each side of the Happy Patchwork Blanket front piece right sides together, one after the other. Start with the two side stripes and then the stripes at the top and bottom.



Repeat the step for the back.



3

Press the front piece seam allowances open and press both the backing piece and the front piece smooth.



SEWING INSTRUCTIONS QUILT - WITH BORDER

4

Lay the front piece on top of your piece of volume fleece batting and smooth out the material so it lays nice and flat.

Pin front piece to the batting with long straight pins or curved quilting safety pins. Or you may secure the two layers with long basting stitches to be removed later.



5

Begin quilting the squares. I prefer to use a somewhat longer stitch length (3.5 mm).

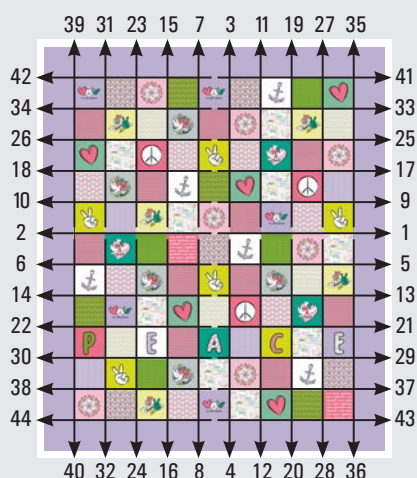
It can be difficult to fit the bulk of the blanket beneath the arm of your machine. Instead of bunching, roll your work to fit.



"QUILTING" IS THE PRACTICE OF JOINING TOGETHER LAYERS OF MATERIAL AND BATTING WITH LINES OF STITCHING.

SEWING INSTRUCTIONS QUILT - WITH BORDER

Method A



You may quilt the layers together a couple of different ways:

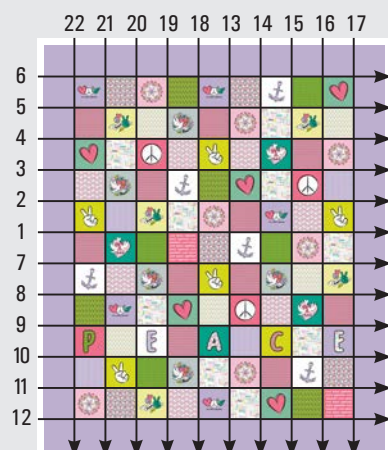
Method A

Begin quilting with a stitching line in the exact center of your blanket. Please see the illustration for the sequence of the following stitching lines.

Be sure to secure each stitching line with a few backstitches.

TO KEEP THE LAYERS ALIGNED, PRACTICE TAUT SEWING BY HOLDING YOUR WORK BEHIND THE NEEDLE FIRMLY AND GUIDING THE MATERIAL GENTLY UNDER THE NEEDLE WHILE SEWING WITHOUT PULLING. OR USE A WALKING FOOT.

Method B



Method B

Begin quilting with a stitching line in the exact center of your blanket. Turn your work 90 degrees and stitch the next stitching line down the middle of the blanket. Turn your work again 90 degrees and stitch a line to the left of first stitching line. Repeat for each stitching line, switching to the left and right of the line stitched before.

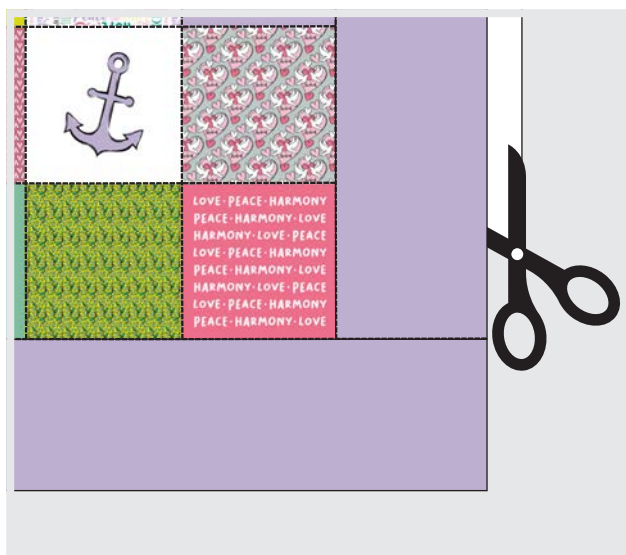
Be sure to secure each stitching line with a few backstitches.

6

Trim any overlapping batting to the size of the quilt front, and then trim an additional 1 cm.

IMPORTANT

Be sure not to cut the quilt front when trimming the batting.



SEWING INSTRUCTIONS QUILT - WITH BORDER



7

Place the quilt front + batting piece on top of the quilt backing piece right sides together and stitch all the way around the quilt. Leave a small opening for turning.



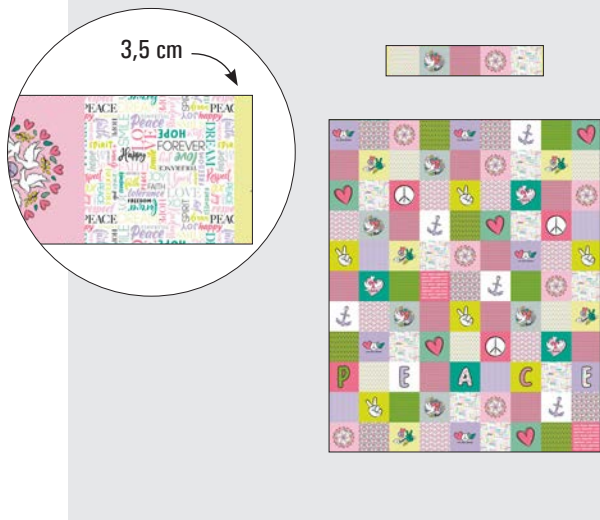
8

Turn the quilt right side out through the opening. Press the edges of the opening toward the inside and close the opening with a few handstitches.



ALL DONE

SEWING INSTRUCTIONS BEDDING - 135 x 200 CM



1

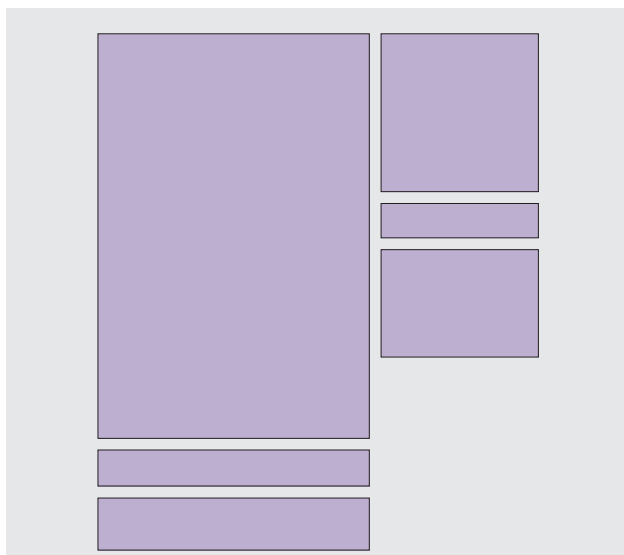
Cut out pieces from Happy Patchwork Blanket as follows.

Duvet cover front: 11 rows of 9 squares

Be sure not to cut right at the edge of the row, but leave 1 cm seam allowance on all sides.

Pillow case front: 1 row

(5 squares, plus an additional 3.5 cm to the right and left)



2

Cut pieces from your combining fabric as follows.

Pillow case upper piece: W 82 x H 17 cm

Pillow case front lower piece: W 82 x H 55 cm

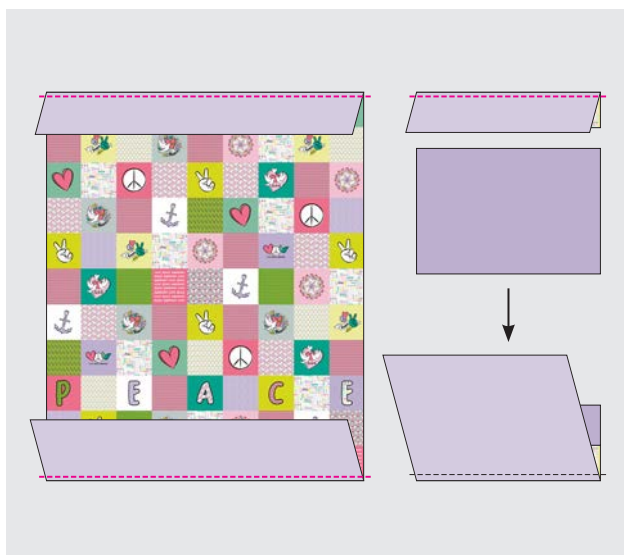
Pillow case back piece: W 82 x H 85 cm

Duvet cover front: W 137 x H 18 cm Vorderseite

Duvet cover bottom piece: W 137 x H 26 cm

Duvet cover back: W 137 x H 205 cm

THE DUVET COVER FRONT AND PILLOW CASE FRONT MAY ALSO BE CUT ONLY FROM THE HAPPY PATCHWORK MATERIAL.

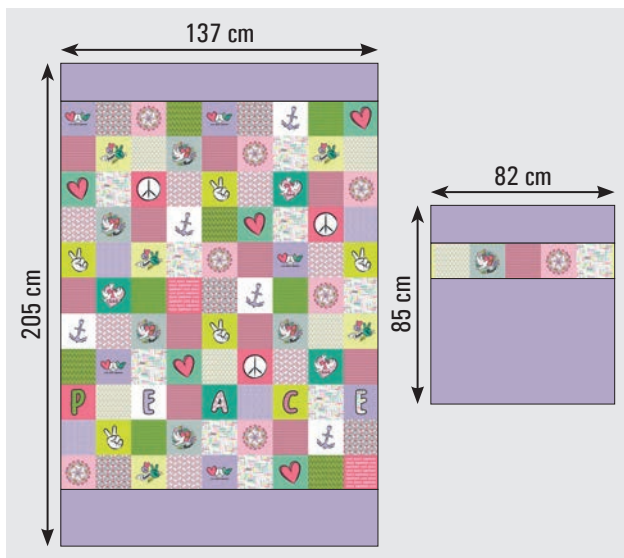


3

Stitch the piece of Happy Patchwork Blanket to the top and bottom pieces of the pillow case and duvet cover with a 1 cm seam allowance.

The smaller piece of combining fabric is the top piece; the larger piece goes on the bottom.

SEWING INSTRUCTIONS BEDDING - 135 x 200 CM

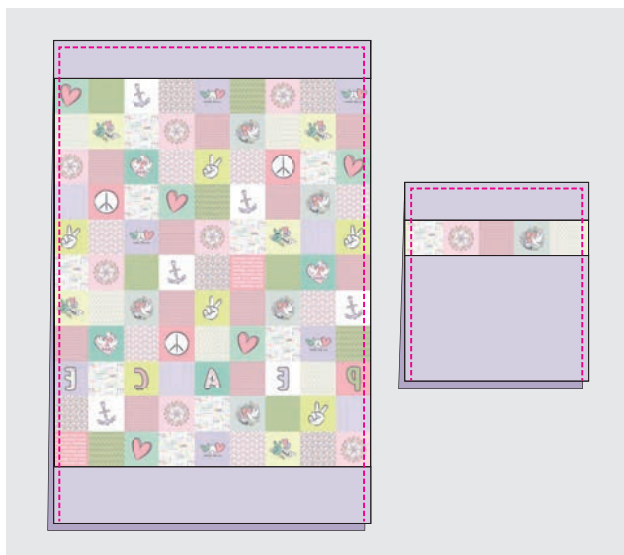


4

Measure the completed front and back pieces and trim to the following dimensions (if necessary).

Front and back pillow case pieces:
W 82 x H 85 cm

Front and back duvet cover pieces:
W 137 x H 205 cm



5

Lay the duvet cover front and back pieces right sides together and stitch along the top and sides. Lay the pillow case front and back pieces right sides together and stitch along the top and the sides.

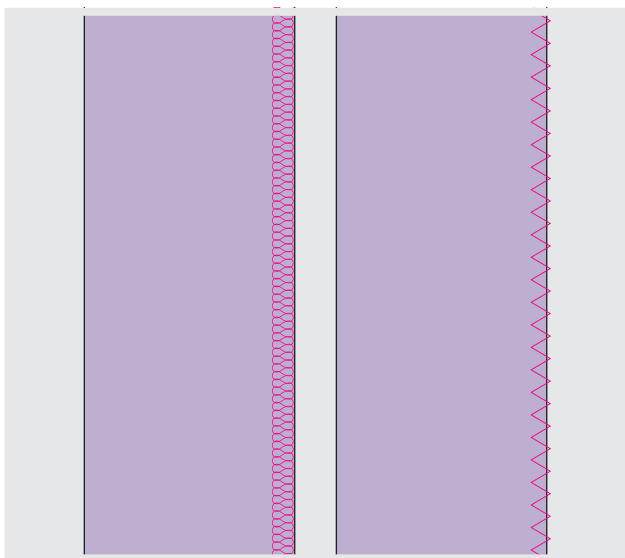
Secure your stitching lines with a few backstitches.



6

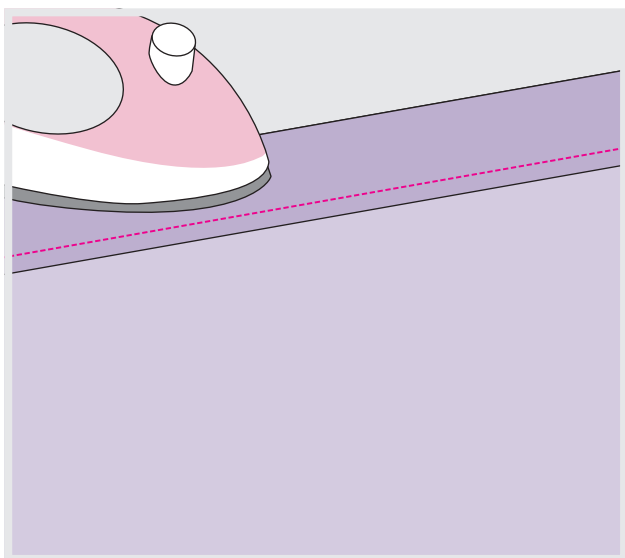
Turn the duvet cover and pillow case right side out and press.

SEWING INSTRUCTIONS BEDDING - 135 x 200 CM



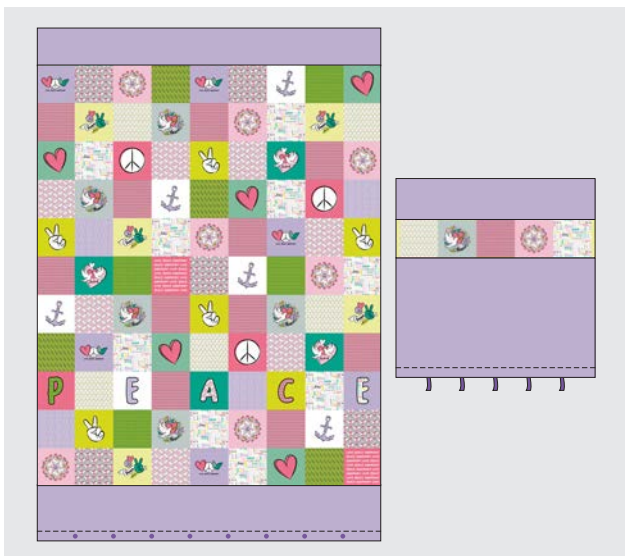
7

Finish the open edges of the duvet cover and pillow case with an overcast stitch.



8

Fold the open edges 4 cm toward the inside and press. Stitch the hems.



9

Add snaps or ties to close.

SEWING INSTRUCTIONS BEDDING - 135 x 200 CM




ALL DONE

SEWING INSTRUCTIONS DRAWSTRING BACKPACK

1

Cut two pieces of Happy Patchwork Blanket to the desired size. Cut two pieces of your combining fabric to the same size, for example:

Happy Patchwork Blanket: 3 rows of 3 squares

Lining: approx. B 45 x H 45 cm

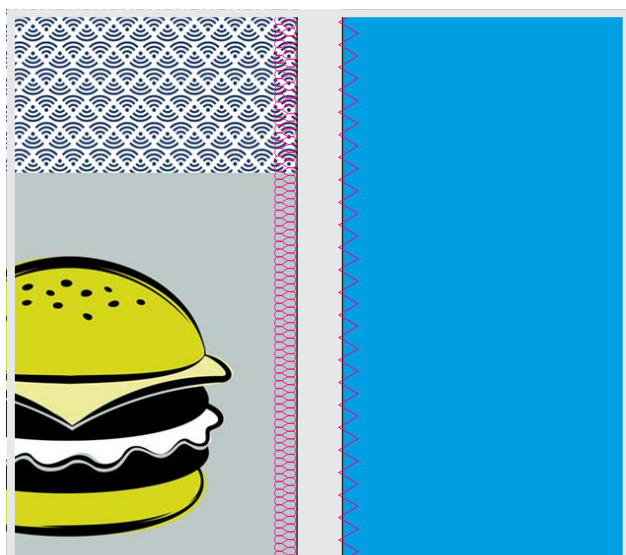
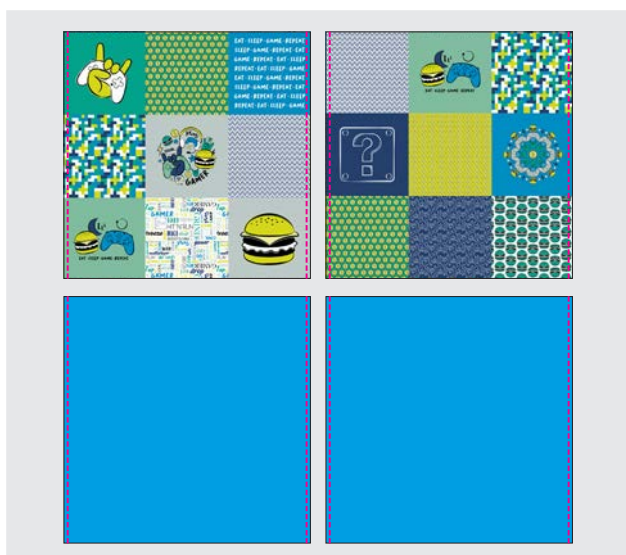
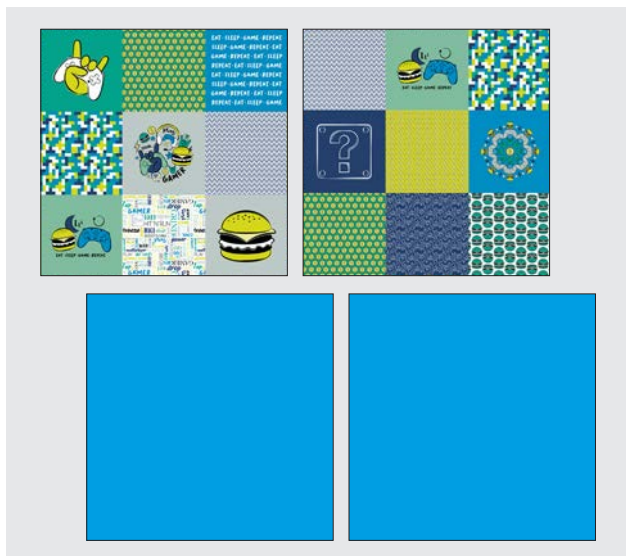
(Stabilizing interfacing: approx. B 45 x H 45 cm)



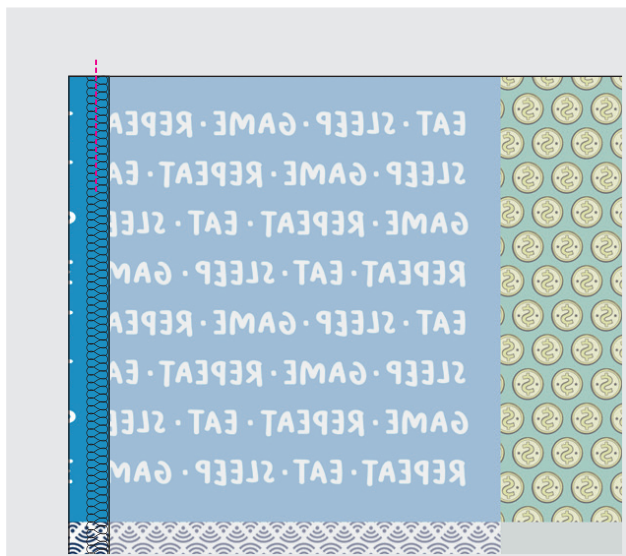
ADHERE PIECES LIGHTWEIGHT FUSIBLE INTERFACING TO THE REVERSE SIDES OF THE BACKPACK OUTER PIECES TO STRENGTHEN THE BACKPACK (OPTIONAL).

2

Finish the fabric edges with an overcast stitch.



SEWING INSTRUCTIONS DRAWSTRING BACKPACK



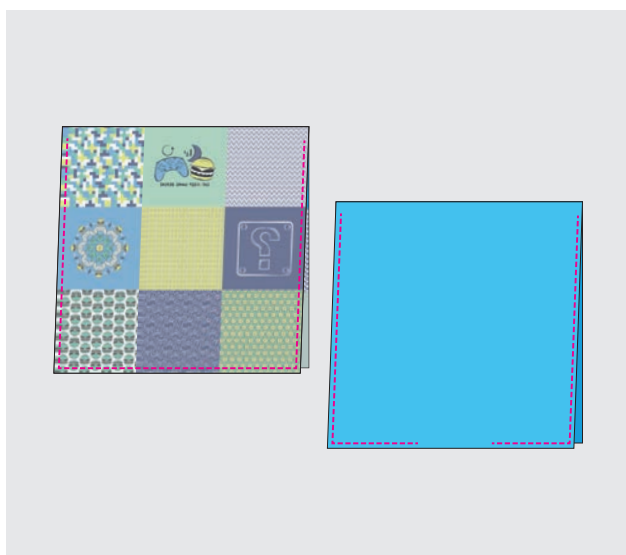
3

Finish the top 3-4 cm of the side pieces. Press the top 3-4 cm of the sides toward the inside and stitch in place.



YOU MAY SUBSTITUTE LOOPS OF FABRIC OR RIBBON FOR GROMMETS. BE SURE TO INSERT THESE LOOPS OF RIBBON OR FABRIC INTO THE LOWER CORNERS WHEN STITCHING THE SIDE SEAMS.

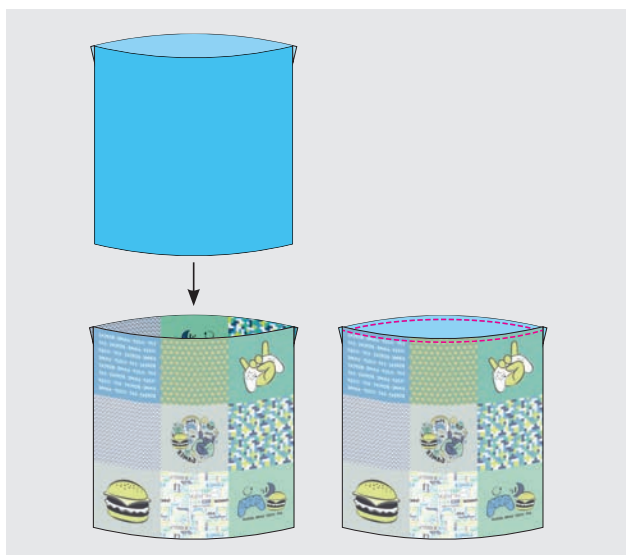
4



Lay the backpack outer pieces right sides together and stitch along the bottom and sides. Start the side seam stitching lines 2.5 cm from the top edge. Lay the backpack lining pieces right sides together and stitch the sides and bottom. Start the side seam stitching lines 2.5 cm from the top edge. Leave a small opening for turning in the bottom of the lining.

5

Turn the lining right side out. Insert the backpack lining into the backpack outer piece and align the side seams. Stitch the lining to the backpack outer along the top edge.



SEWING INSTRUCTIONS DRAWSTRING BACKPACK

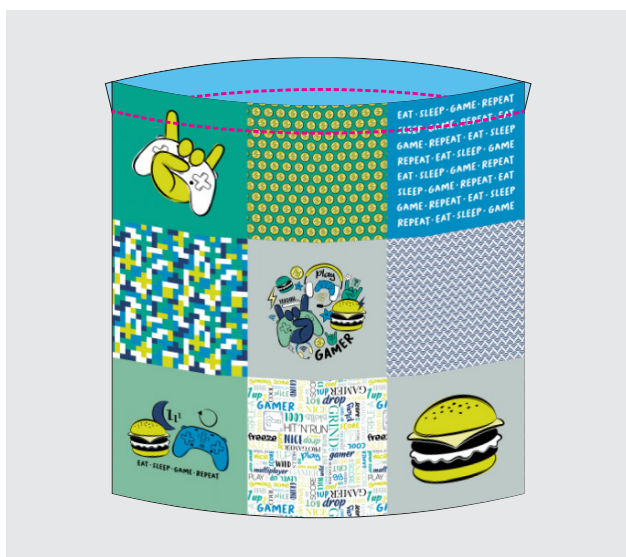
6

Turn your work right side out through the opening in the lining. Close the opening with a few hand stitches. Press your work.



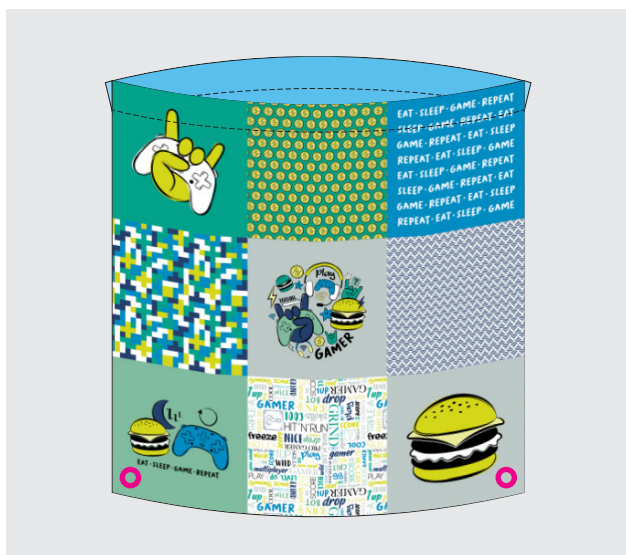
7

Insert the lining into the backpack outer. Stitch the casing 2.5 cm from the top edge.



8

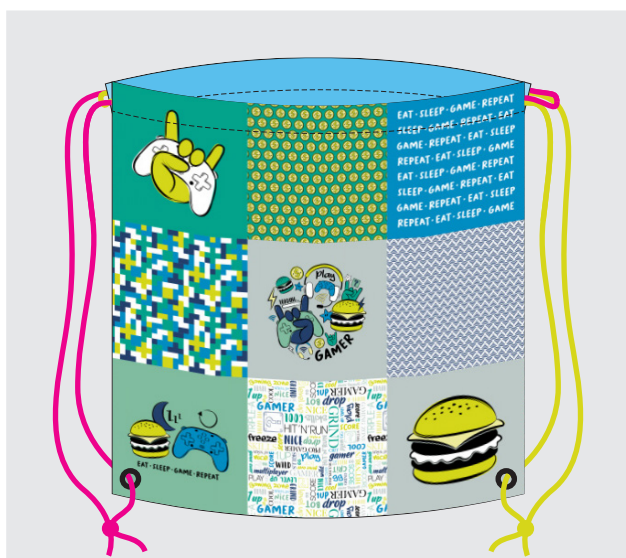
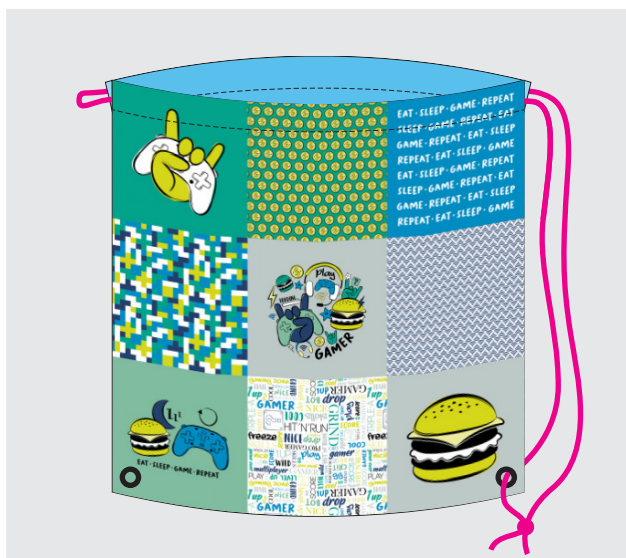
Set grommets in the bottom two corners.



SEWING INSTRUCTIONS DRAWSTRING BACKPACK

9

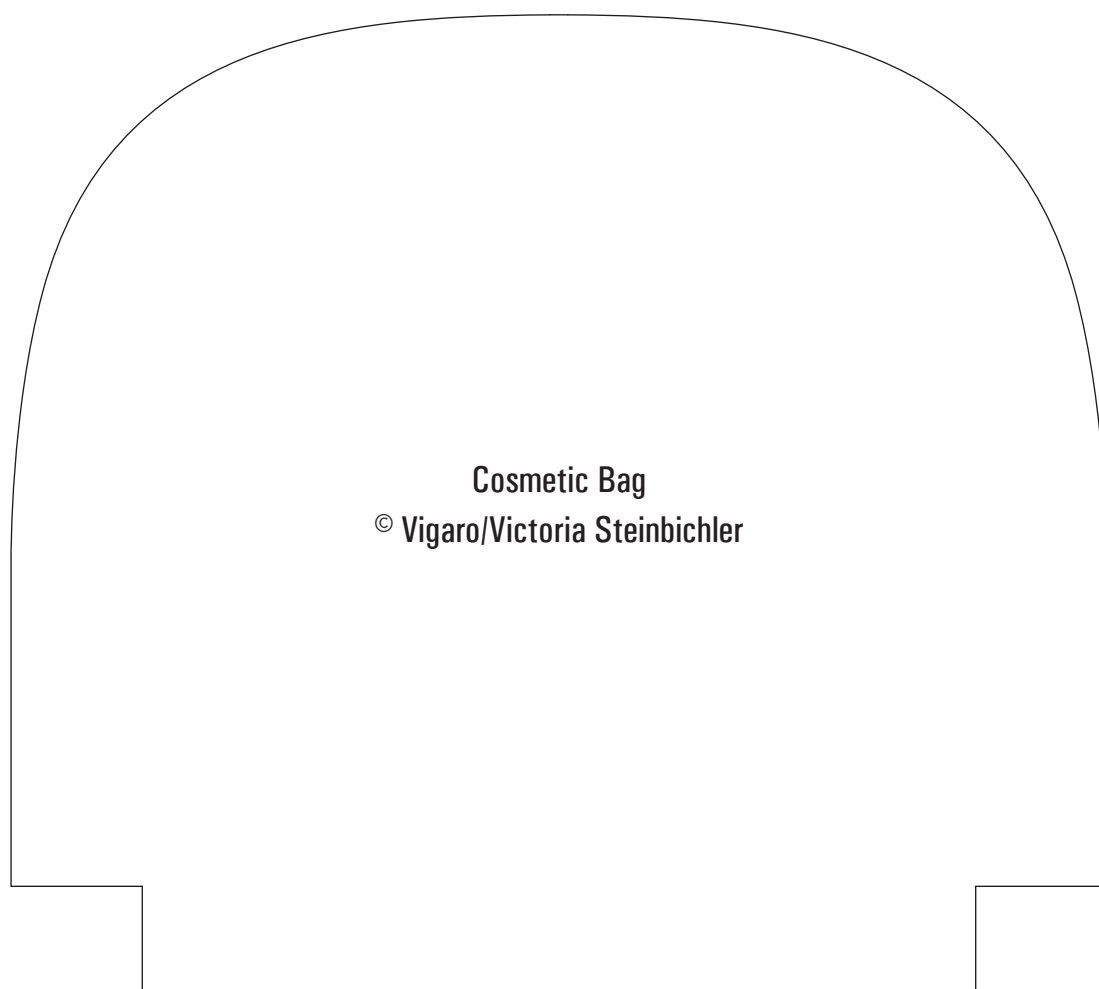
Cut your cord into two equal lengths. Thread the cord through the tunnel and grommets as illustrated.



ALL DONE

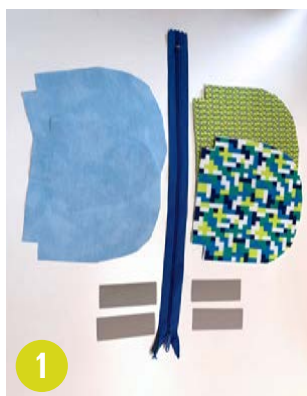


PATTERN



3x3 cm

SEWING INSTRUCTIONS COSMETICS BAG - BY VIGARO/VICTORIA STEINBICHLER



Cut all pieces (Step 1). Add embellishments to the outer pieces as desired (Step 2).

Stitch the bottom seams (Step 3-4). However, leave a small opening in the lining bottom seam for turning (Step 5-6).

Stitch the zipper tapes (Step 7) to the bag outer pieces (Step 8-11). Baste the cord to the lining back piece within the seam allowance.

Stitch the box corners of the lining and the outer pieces.

Stitch the lining to the zipper attached to outer fabric right sides together (Step 12-13).

Turn the bag right side out. Close the turning opening lining by hand or with a sewing machine (Step 14-16).




ALL DONE

