

Instructions ANIMAL BAGS

3.0

by *käselotti*



Hey there! Awesome, you've decided to sew an Animal Bag!

Before you start: Due to the treatment after the printing of the fabric, some diagonal warping may appear so that the pieces don't seem to fit at first. But don't worry! You can quickly solve the problem by courageously pulling the fabric in the opposite direction.

As all the Animal Bags are sewn nearly the same way, this instruction uses the pictures of the fox design of the first series.

In addition the Animal Bags („Tierbeutel“) panel, you will need the following notions:



Drawstring sportpack:

High loft poly batting
approx. 50x30 cm
5-6mm braided round cord
approx. 240 cm



Pen and pencil case:

20 cm zipper
12 cm for the bee pencil case



Neck wallet:

5-6mm braided round cord
approx. 75 cm;
Snap fastener or a piece of hook-and-loop tape



Pocket Buddy

A handfull of poly fiber fill

Drawstring sportpack:



bee variation



You will need the following pieces for the bee drawstring sportpack: 2x main bag piece plus pieces of corresponding lining, 2x head piece flaps, 4x foot pieces and 4x wings, 4x antennae, also 2x rectangles for the cord loop.



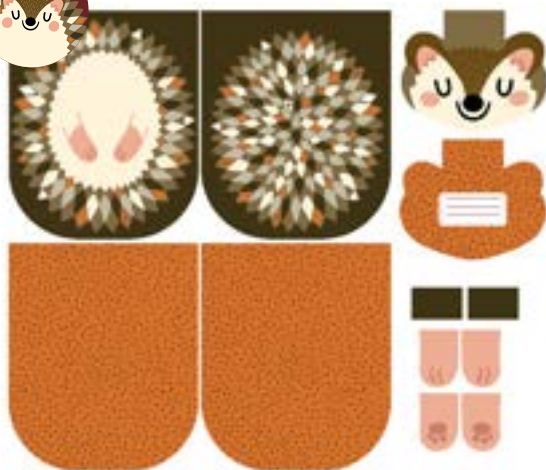
ladybug variation



You will need the following pieces for the ladybug drawstring sportpack: 2x main bag piece plus pieces of corresponding lining, 2x head piece flaps, 4x foot pieces and 4x wings, 4x antennae, also 2x rectangles for the cord loop.



hedgehog variation



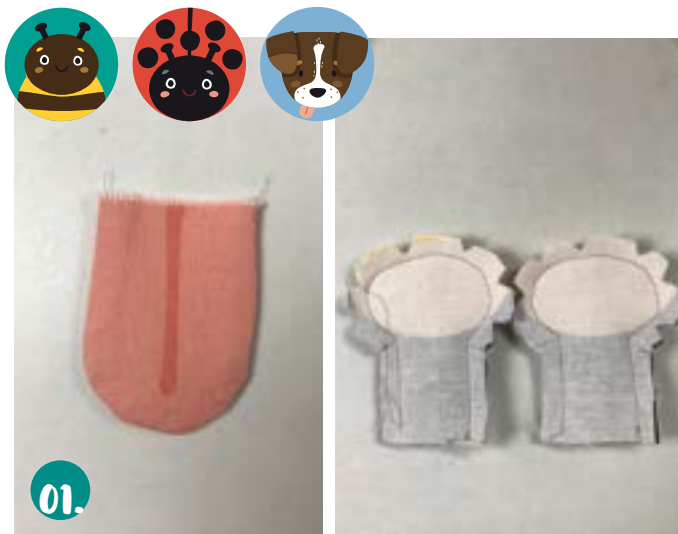
You will need the following pieces for the hedgehog drawstring sportpack: 2x main bag piece plus pieces of corresponding lining, 2x head piece flaps, 4x foot pieces and also 2x rectangles for the cord loop.



dog variation



You will need the following pieces for the dog drawstring sportpack: 2x main bag piece plus pieces of corresponding lining, 2x head piece flaps, 4x foot pieces, 2x tongue and also 2x rectangles for the cord loop.



First sew the little extra pieces: The pieces for the dog tongue or the antennae are placed fabric right sides facing and sewn together. Leave the straight edges open, turn inside out and iron. Stuff the antennae with some poly fiber fill or a filling of your choice.

The parts for the head, feet and tail (or wings for the penguin) are placed fabric right sides together and then placed atop a cut piece of volume fleece. Be sure to stack paw fronts to paw backs.



The antennae are placed onto the head piece as shown on the picture and thus inserted into the seam. Open edges of the antennae are facing outwards. Put the head flap lining right sides facing on top and pin it in place.

The same step is to be done with the dog tongue. Place the tongue on the edge of the snout, open edge facing outwards. Put the head flap lining right sides facing on top and pin it in place. Make sure the top side of the tongue and the front of the head flap face each other.



Stitch all layers together around the edges. Leave the straight edges open for turning. Trim the poly batting from the seam allowance to reduce bulk.



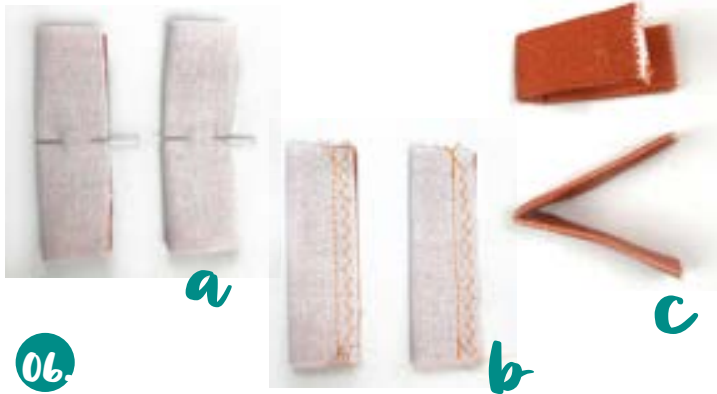
Clip the corners and notch the round edges within the seam allowance for a smooth turn.



Turn pieces right side out. Gently press all parts with a cool iron.



Fold the dog's ears along the dashed line and stitch them on the top edge. This way, the dog will have nice floppy ears.



06. Fold the loop pieces in half lengthwise (a). Stitch along the long edge and finish the seam (b). Turn the loops right side out, fold in a half and press flat (c).



07. Lay each main bag piece and a corresponding lining piece fabric right sides together. Stitch along the upper straight edge. Pull the two halves apart and lay your work flat. Press the seam allowance open.



08. Fold the bag piece and lining piece back right fabric sides together. Mark 3 cm down from the seam. Cut 1 cm into the body of the bag. Pull the lining from the main bag piece and lay your work flat.

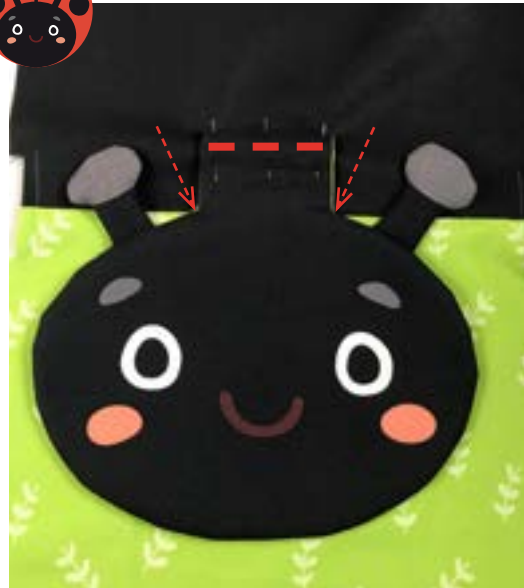
Fold the resulting small flap toward the fabric wrong side and press. Stitch the flap in place with a straight stitch. Repeat for the opposite bag piece.



bee variation



ladybug variation



hedgehog variation



dog variation



09.

Lay head piece onto the back main bag piece as shown with the nose pointing toward the bag lining. Fold the top flap edge in and secure with a few straight pins. Trim any excess batting as required.

Place the head piece such that the inner corners of the ears and/or the corner between the head and the flap of the penguin aligns with the seam (see arrows). Stitch the head to the back piece only along the top of the flap piece.



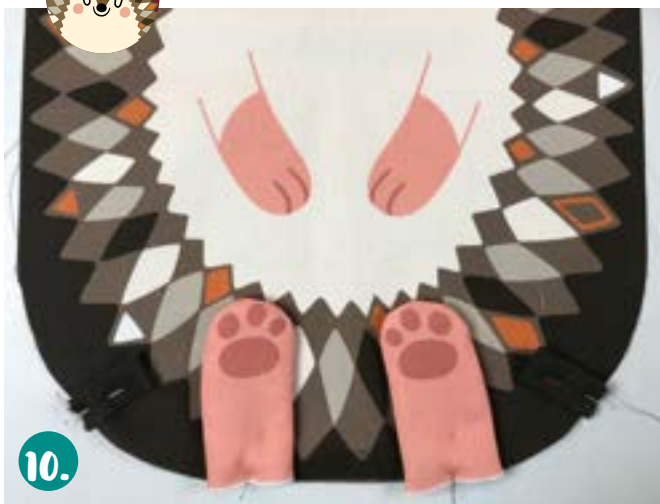
bee variation



ladybug variation



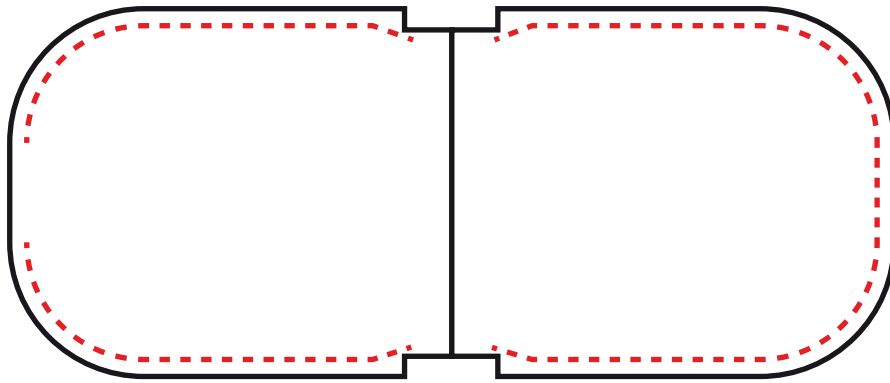
hedgehog variation



dog variation



Pull the lining from the bag front piece and lay this piece flat. Place the paws, feet, tail and/or wings (as the case may be) and the loops onto only the bag front as illustrated here and secure with pins or basting stitches.



Because the heads are a bit wider, it is a good idea to fold in the sides of the head piece and pin them out of the way, so that the head does not get caught in the side seams.



11.

Stitch the bag front with the paws/wings/tails to the bag back piece with the head. Begin and end this stitching approximately 5-7 mm from the little edge flaps, so that the seam does not interfere the the cord threaded through the casing. Be sure to leave a small opening for turning in the lining half.



12.

Close the turning opening with a few hand stitches. Stitch a casing around the top edge.

13.

Cut the round braided cord into two equal pieces approx. 120 cm long. Thread one piece of cord from the left hand side and through the front bag piece casing, out, and then in through the back piece casing and exiting again on the left. Thread the other piece of cord from the right hand side and through the front bag piece casing, out, and in through the back piece casing and exiting again on the right side. Thread one end of each cord through the corresponding bottom loop and tie the ends together into a knot.

Pen and pencil case:



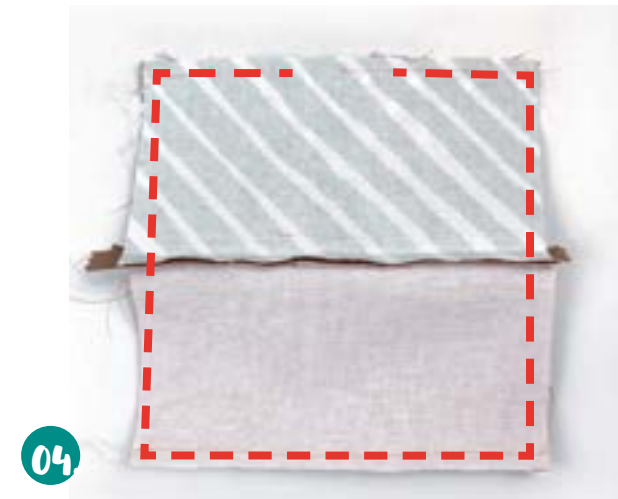
You will need the four rectangular pieces for the pencil case. Place your zipper face down onto the pencil case outer piece, aligning zipper tape edge to the fabric edge. Lay a lining piece on top and sandwich the zipper in between. Secure with a few pins and stitch along the one zipper tape. Press the lining and the outer piece in the direction away from the zipper teeth.



Sandwich the opposite zipper tape between the remaining two pencil case pieces. Secure with pins and stitch along this opposite zipper tape. Press this lining and outer piece in the direction away from the zipper teeth.



Your work should look like this at this juncture.



Lay the pencil case outer pieces right sides together and stitch along the long edge opposite the zipper. Lay the pencil case lining pieces right sides together and stitch along the long edge, however, leave a small opening for turning in this stitching line.



05

Clip the ends of the seam allowance (the pencil case corners) for a smooth turn. Turn your work right side out through the turning opening. Close the turning opening with a few hand stitches. Press your work.



We recommend using a shorter zipper for the bee pencil case and place it on the short end.

Neck wallet



01.

For the neck wallet, you will need the 2 rather square pieces and 2 matching lining pieces, as well as the 2 flap pieces and the 2 loop pieces. First, lay the flap lining piece on the front outer piece and mark the positions for your snap fastener or piece of hook-and-loop tape.



02

Add the snaps (fuse bits of fusible interfacing to places you will add the snaps beforehand to strengthen this stress point). Or stitch the two halves of the hook-and-loop tape in place.

03



Fold the two short edges of the loop pieces 1 cm toward the center and press. Stitch along the two folded-in fabric edges.

04



Lay the two flap pieces right fabric sides together and stitch along the round edge. Leave the straight edge open. Notch the seam allowance for a smooth turn. Turn right side out and press.

05



Lay the flap piece centered along the top edge of a lining piece. Lay the outer wallet back piece (the piece without the snap/hook-and-loop tape) on top, fabric right sides together. Stitch the lining to the outer piece along the top edge, catching the flap piece in this stitching line.

Lay the opposite lining piece to the outer wallet front piece (the piece with the snap/hook-and-loop tape) fabric right sides together and stitch.

06



Press the seam allowances open. Your work should look like this at this point.



07.



Fold the loop pieces in half and pin to the neck wallet outer back piece as shown above. Depending on the thickness of your braided cord, you may have to trim these pieces. Fold the sides of the flap piece toward the center and pin to prevent the flap becoming caught in the side seams.

08.



Lay the opposite neck wallet piece on top and secure with a few straight pins.

09.



Stitch around the two pieces. Leave a small opening for turning in the lining part. Notch the corners for a smooth turn. Turn your work right side out and press.

10.



Close the turning opening with a few hand stitches. Thread your braided cord through the loops and knot the ends.

Pocket Buddy



For your Pocket Buddy, you will only need the two animal front and back pieces. Lay these two pieces fabric right sides together.



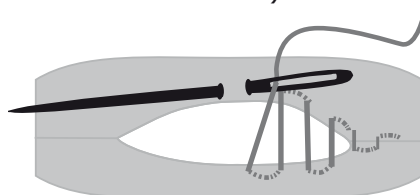
Stitch all the way around, but leave a small opening for turning. Finish the seam. Clip the corners of the ears within the seam allowance and notch the rounded edges for a smooth turn.



Turn your Pocket Buddy right side out. Use a point turner or chopstick in the corners of the ears. Fill with poly fiber fill or a filling of your choice.



Fold in the edges of the turning opening and close the opening with mattress stitches (see illustration below).



Mattress stitch