

# COZY PILLOW DIY INSTRUCTIONS



# CONTENTS

<b>INTRODUCTION</b> .....	Page 3
<b>IMPORTANT INFORMATION</b> .....	Page 4
<b>SEWING INSTRUCTIONS PILLOW WITHOUT ZIPPER</b> .....	Page 5-8
<b>SEWING INSTRUCTIONS PILLOW WITH ZIPPER</b> .....	Page 9-11
<b>SEWING INSTRUCTIONS PILLOW WITH ENVELOPE CLOSURE</b> .....	Page 12-13
<b>SEWING INSTRUCTIONS SHOPPING TOTE</b> .....	Page 14-17

# INTRODUCTION

Hello sewing friends!

First of all, a **HUGE THANK YOU** for purchasing the Happy Pillow DIY. I hope you enjoy it and I hope you like it as much as I do. Be sure to read through the instructions **before sewing**.

Up to six throw pillows or three shopping totes can be sewn from one Happy Pillow DIY panel. You can either sew square throw pillows (40 x 40 cm) or round pillows (diameter 40 cm) from the pieces. Enough material is included for making piping to edge up to four pillows. These same strips of material are used to make the handles on the shopping totes.

Please also share with me your finished work posted on social media! Please tag me in your Facebook and Instagram posts, where I'm guaranteed to see it! 😊

[www.facebook.com/lyckligdesign](http://www.facebook.com/lyckligdesign)

Instagram: @lyckligdesign

Enjoy!

Sincerely yours,

Berit

© Lycklig Design. All Rights Reserved. This HAPPY PILLOW DIY was designed with great attention to detail.

The HAPPY PILLOW DIY is intended for private, home sewing use only. Mass production is prohibited. User discretion is advised. It is expressly understood that the author, designer and affiliates make no warrants as to accuracy in the instructions and shall assume no liability whatsoever for possible errors and/or omissions in the instructions.

# IMPORTANT INFORMATION

## MATERIAL LIST

DEPENDING ON THE PROJECT, THE FOLLOWING MATERIALS AND NOTIONS ARE REQUIRED FOR SEWING HAPPY PILLOW DIY:

### PILLOW

- Three to six 40 x 40 cm or Ø 40 cm pillow inserts (depending on whether you choose to back your pillows with a Happy Pillow panel or another fabric of your choice)
- 170 cm 5 mm cord per pillow for the piping
- If you plan to edge more than four pillows with piping, additional strips of woven fabric measuring 3 cm x 170 cm (shorter for round cushions), cut preferably on the true bias
- Matching woven fabric to back the pillows (optional - see below)

If you choose to include a zipper, make an envelope closure or back the pillows with a different fabric, you will require the following:

#### With zipper

- 30 cm zipper for each pillow.

#### With envelope closure

- 2 x pieces of fabric measuring 42 x 32 cm per pillow.

#### Different fabric backing

- 1x woven fabric measuring 42 x 42 cm per pillow.

## SHOPPING TOTE

- 2 x pieces of fabric for the lining per shopper each measuring 42 x 40 cm
- For a larger tote, for example, imitation leather 2 x pieces 42 x 18 cm (optional)

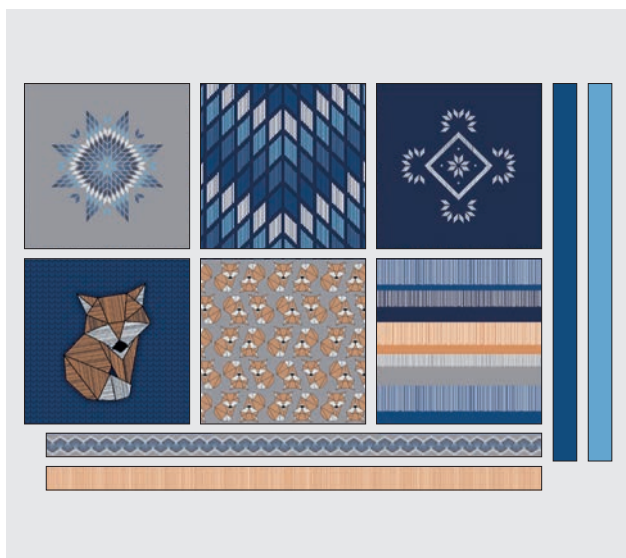
## ATTENTION!

The narrow stripes are not enough for cushion piping AND handles for the shopper.

If necessary, cut out additional stripes of fabric:.

For the handles of the shopper, 4 strips of 6 x 90 cm each or 1 strip of 3 x 170 cm for each piping

## SEWING INSTRUCTIONS PILLOW - WITHOUT ZIPPER



1

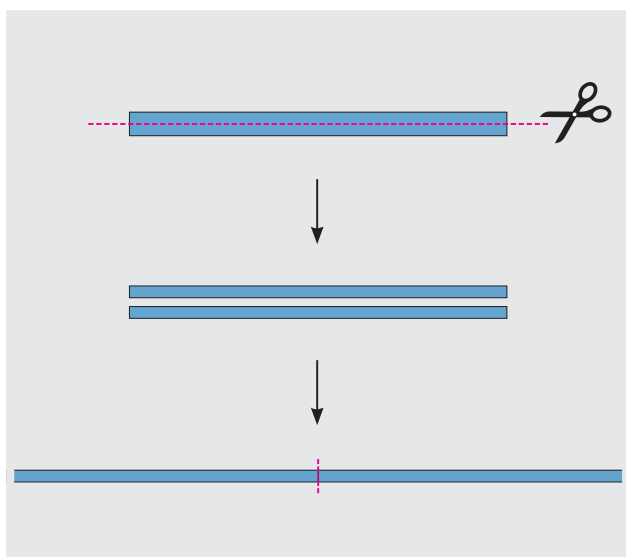
Cut each Happy Pillow DIY piece from the panel and, if necessary, the pillow backing pieces from a coordinating fabric (42 x 42 cm).

**PLEASE NOTE:** To sew circular pillows, cut each square into a circle with a 42 cm diameter.



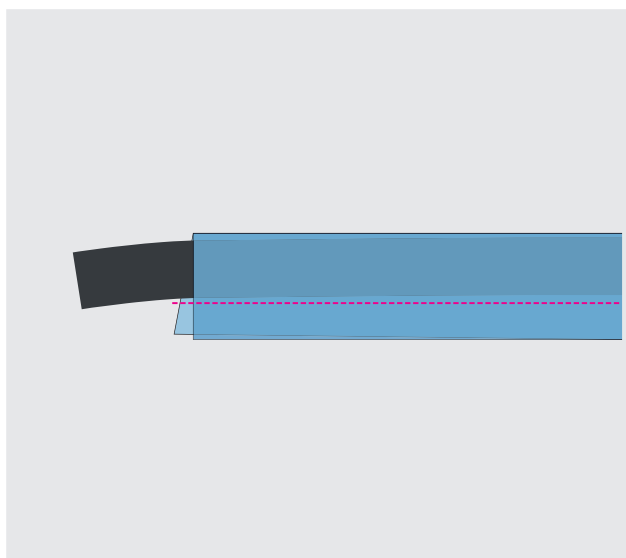
2

To make the piping, cut the narrow strips of fabric in half lengthwise down the middle. Stitch the ends of the thin strips together, right sides together to create one long strip per colorway. You will have created four long strips, one for each color/printed design.

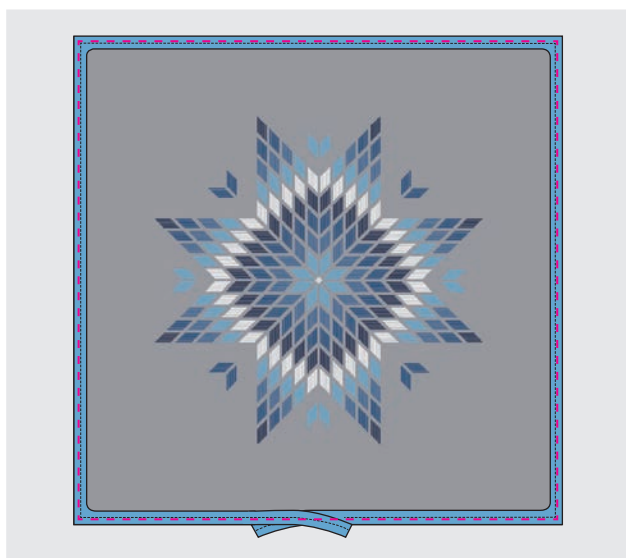


3

Exchange your regular presser foot for a zipper foot. Set your needle to the left side of the presser foot. Lay your 5 mm cord on the strip wrong side and fold the strip over the cord. Stitch the two halves of the piping piece together with the cord in between.

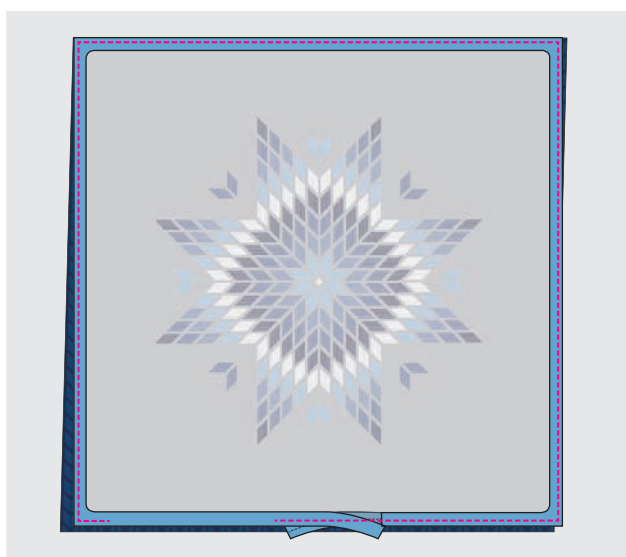


## SEWING INSTRUCTIONS PILLOW - WITHOUT ZIPPER



4

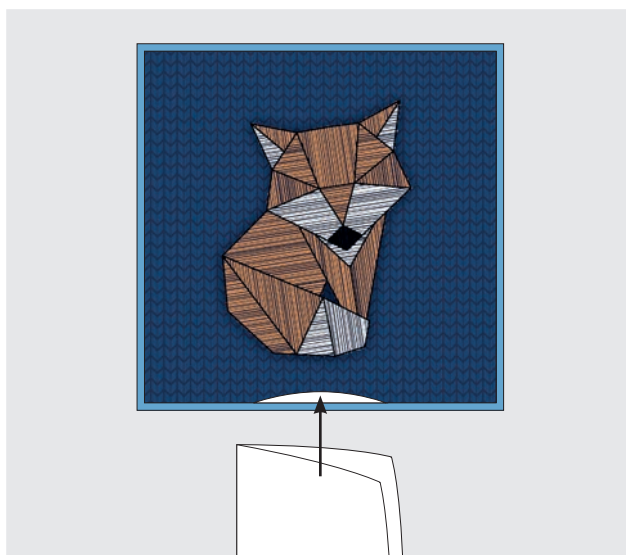
Pin the piping to one pillow panel. Align the raw edge of the piping with the edge of the panel. Clip into the seam allowance of the piping at the corners for better manoeuvring of the piping around the square corner. Overlap the ends of the piping or finish using the continuous piping method. Move your sewing needle to the left of the zipper foot and stitch the piping to the panel close to the cord.



5

Place the panel with the piping onto the opposite pillow piece fabric right sides together.

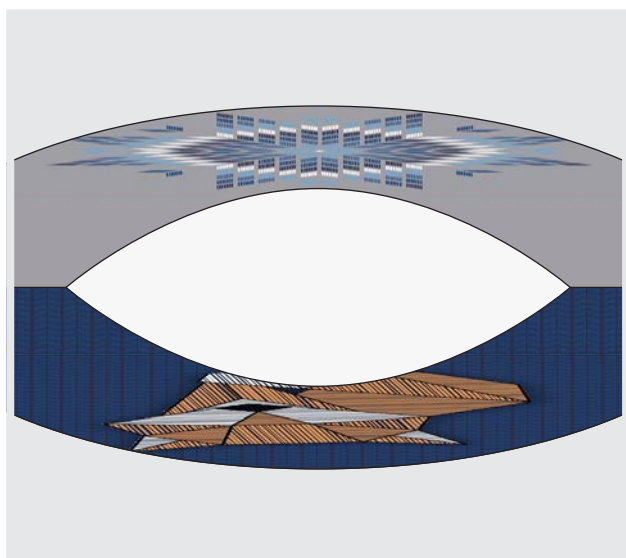
Stitch around the pillow close to the encased cord. Leave a small opening for turning.



6

Trim the seam allowance at the corners for a smooth turn. Turn your work right side out. Press your work and press the seam allowances of the opening toward the inside. Insert a finished pillow insert into the opening.

## SEWING INSTRUCTIONS PILLOW - WITHOUT ZIPPER

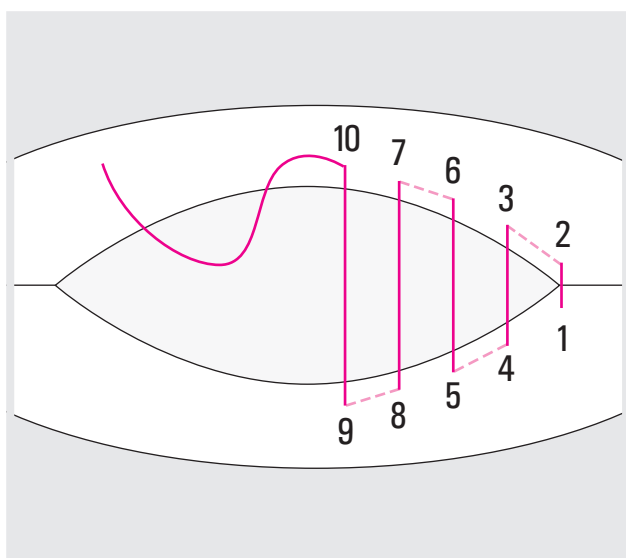


7

Close the opening with a ladder stitch.

*Unbroken lines show the thread on the item right side. Dashed lines indicate the path of thread on the fabric wrong side.*

Start by sewing a stitch from the fabric wrong side at one end of the opening and pull taut. The subsequent stitches will be sewn loosely and pulled taut in a final step.



Begin stitching 7 mm from the edge (at the inside edge of seam allowance) and stitch across the seam (1).

Now insert your needle just under the pressed seam allowance edge and stitch parallel to the opening (2). Your thread will lay across the fabric wrong side.

Pull your needle up toward you and stitch the next stitch across the opening. Be sure to leave this stitch somewhat loose. (3)

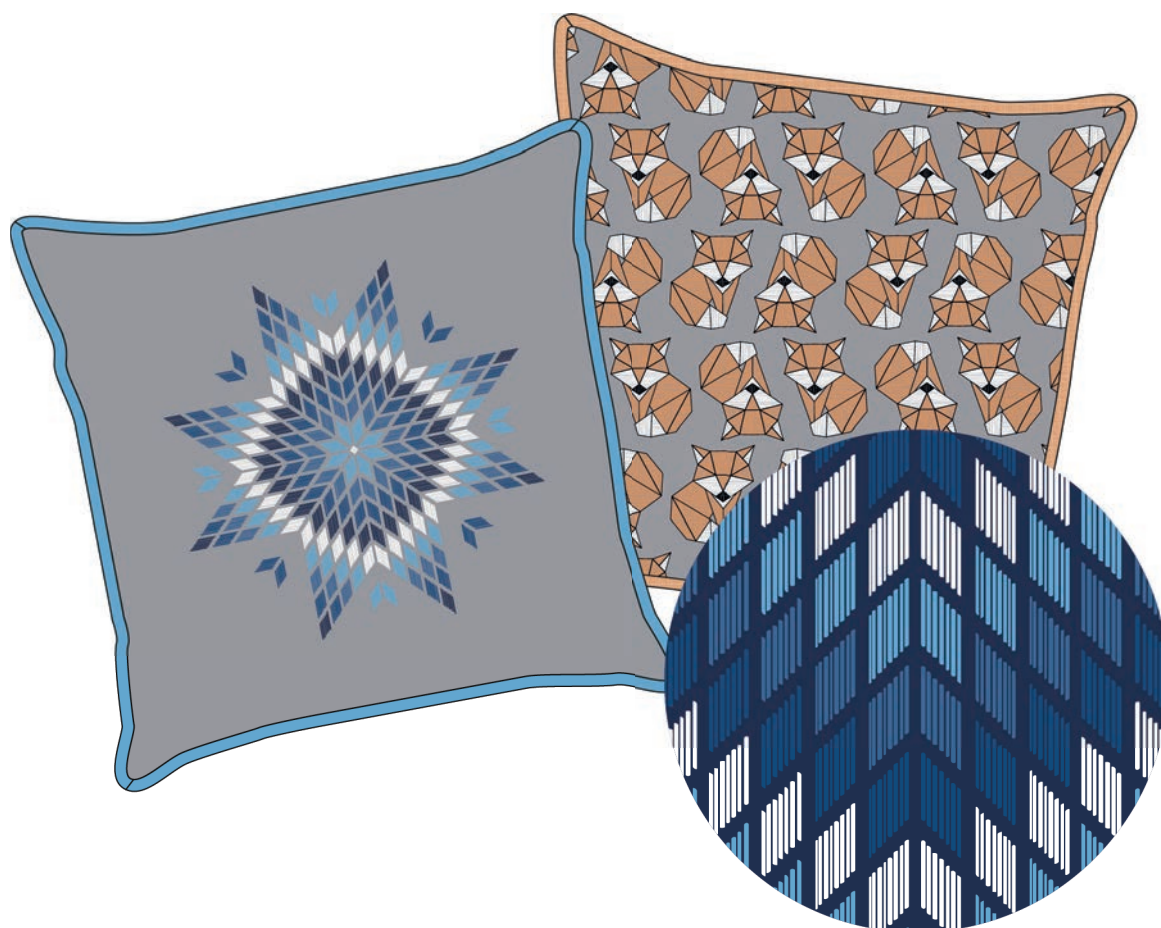
The next stitch will be sewn parallel to the seam along the opposite seam allowance. Your thread will lay on the fabric wrong side. (4)

Pull your needle up again toward you and stitch the next stitch across the opening. Be sure again to leave this stitch somewhat loose. Repeat these loose stitches along the opening.

Gradually, you will stitch "rungs" across a "ladder" all the way across the opening. In a final step, pull the thread taut and the opening will close securely. Anchor and knot the thread to secure the seam.



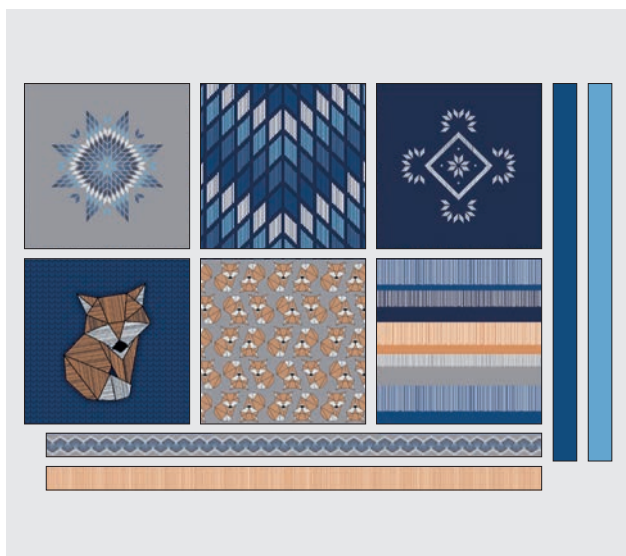
# SEWING INSTRUCTIONS PILLOW - WITHOUT ZIPPER



**ALL DONE**



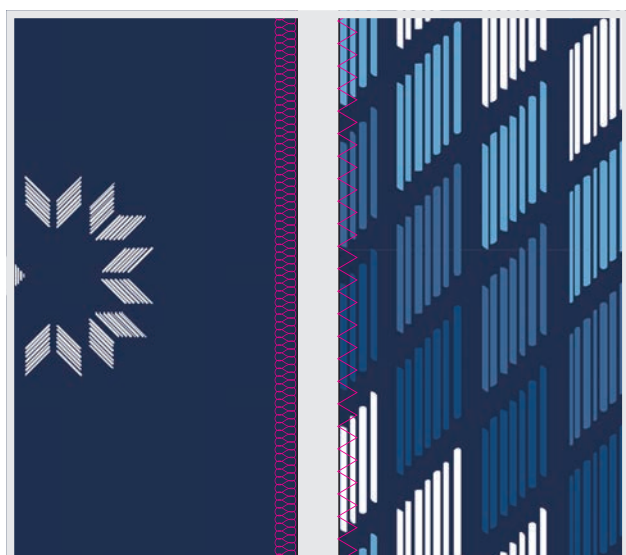
## SEWING INSTRUCTIONS PILLOW - WITH ZIPPER



1

Cut each Happy Pillow DIY piece from the panel and, if necessary, the pillow backing pieces from a different matching fabric (42 x 42 cm).

**PLEASE NOTE:** To sew circular pillows, cut the Happy Pillow DIY square into a circle with a 42 cm diameter.



2

Finish the pieces edges with an overcast stitch.

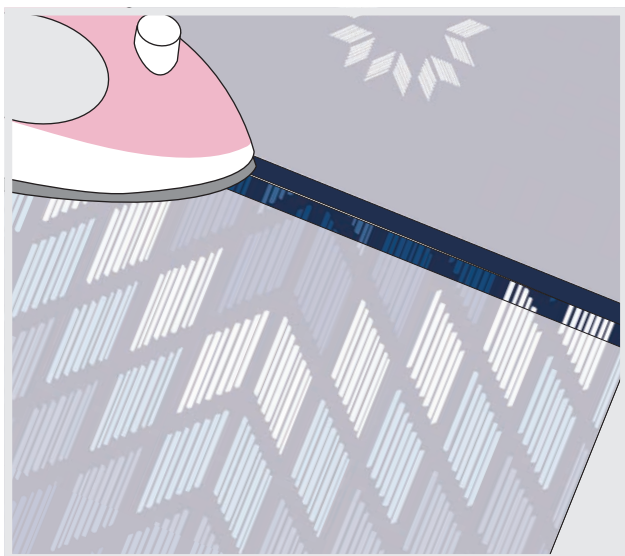


3

Lay the pillow front on top of the pillow back right sides together.

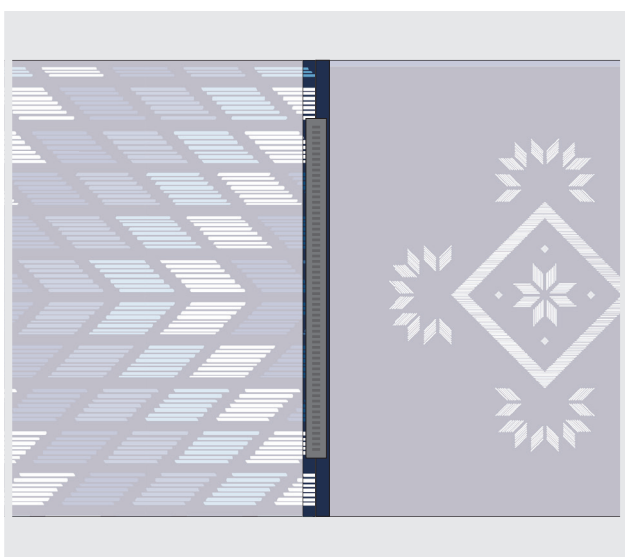
Stitch two 5 cm stitching lines on the pillow lower edge at each corner.

## SEWING INSTRUCTIONS PILLOW - WITH ZIPPER



4

Open the seam allowance and press. In the next step, a zipper will be inserted.



5

Using pins or basting tape, secure your closed zipper to the seam allowance. Lay your zipper, so that the teeth are against the opening. Stitch all the way around the zipper with a straight stitch. Open the zipper.



## SEWING INSTRUCTIONS PILLOW - WITH ZIPPER



6

Lay the pillow front and back pieces right sides together and stitch the open sides closed with a straight stitch. Trim the seam allowance at the corners for a smooth turn.

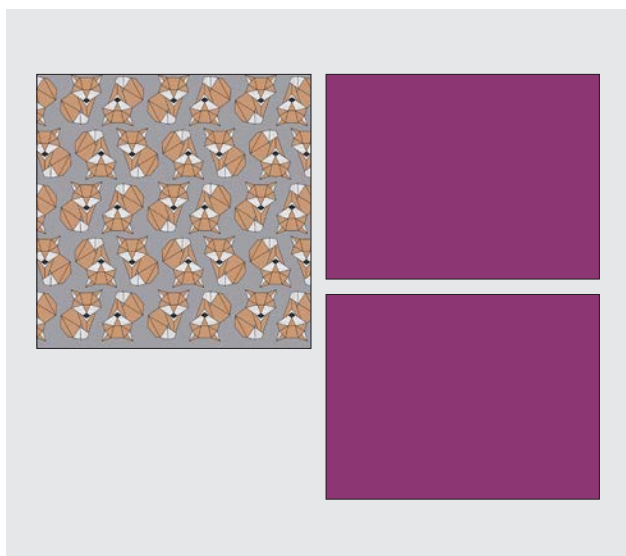
Turn the pillow cover right side out through the open zipper. Press your work.

Insert your pillow insert. Close the zipper.



**ALL DONE**

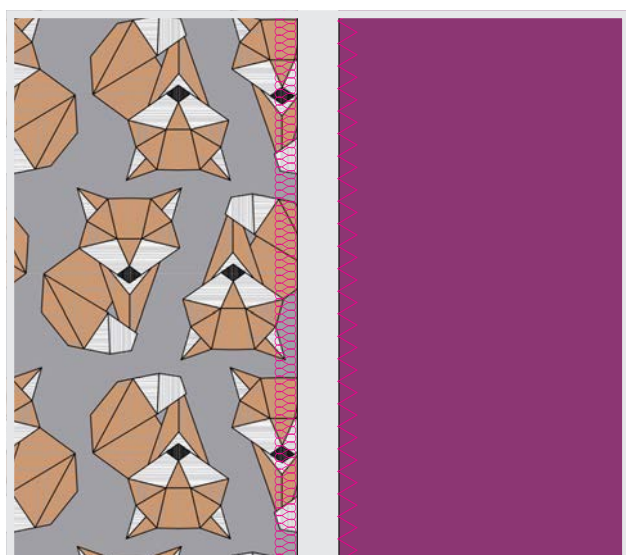
## SEWING INSTRUCTIONS PILLOW - WITH ENVELOPE CLOSURE



1

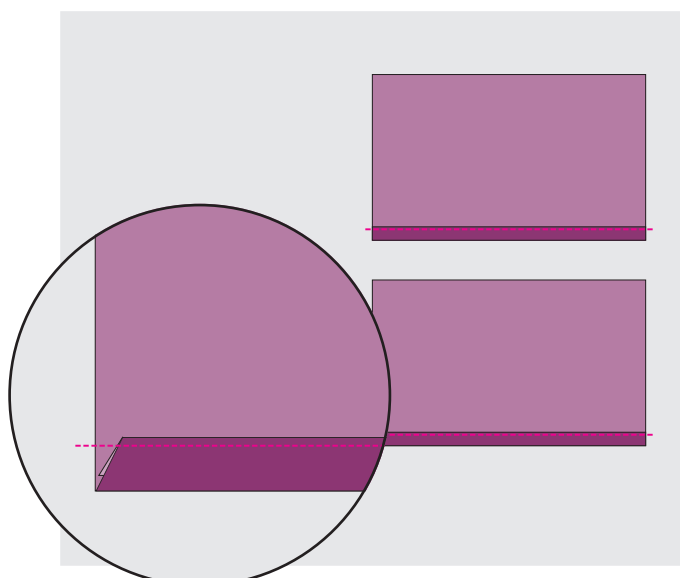
Cut out one square Happy Pillow DIY panel. Cut two pieces of fabric measuring 42 x 32 cm each.

**PLEASE NOTE:** To sew circular pillows, cut the Happy Pillow DIY square into a circle with a 42 cm diameter.



2

Finish all edges with an overedge stitch.



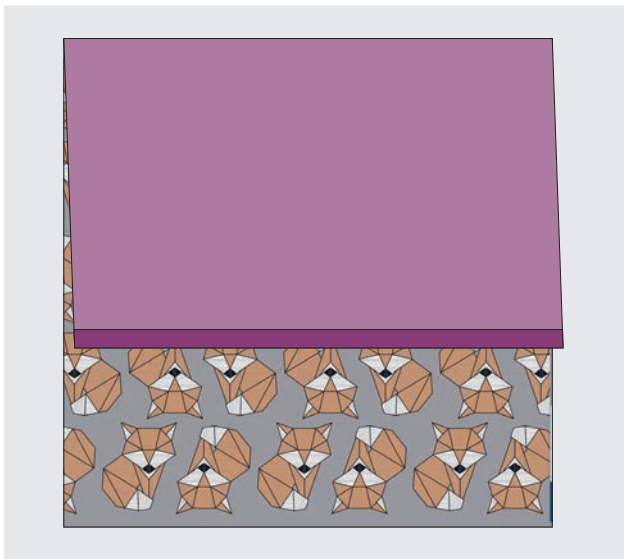
3

Fold over one long edge on each of the back pieces 1 cm toward the wrong side and press. Fold over this edge again 1 cm, press and edge stitch along the first fold with a straight stitch.



NOW ADD PIPING  
IF DESIRED, SEE  
INSTRUCTIONS  
WITHOUT ZIPPER.

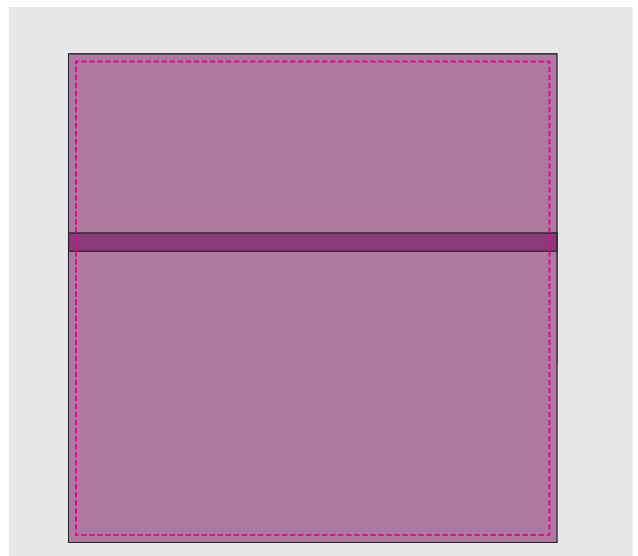
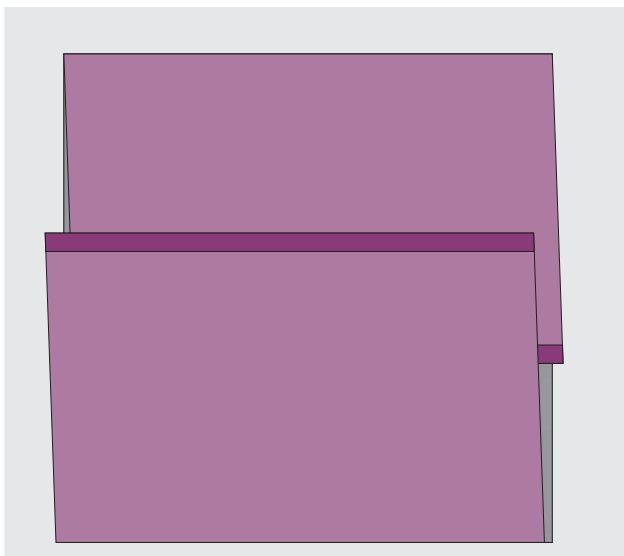
## SEWING INSTRUCTIONS PILLOW - WITH ENVELOPE CLOSURE



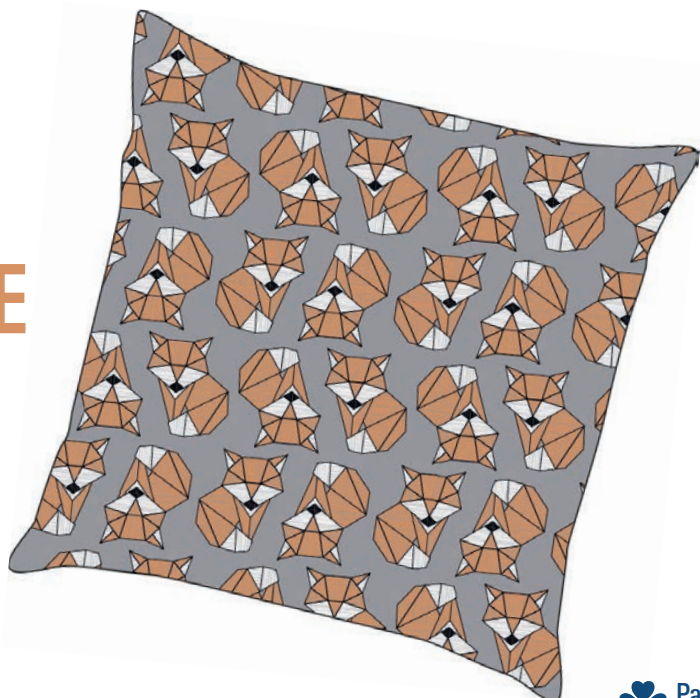
4

Lay the two back pieces on the pillow front piece right sides together and secure with a few straight pins.

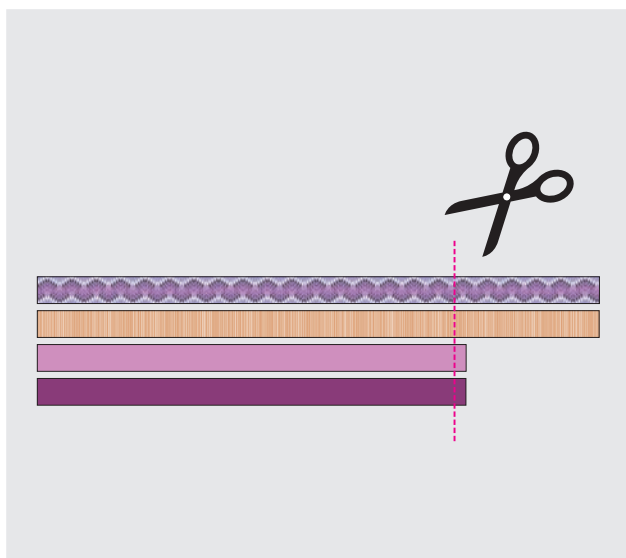
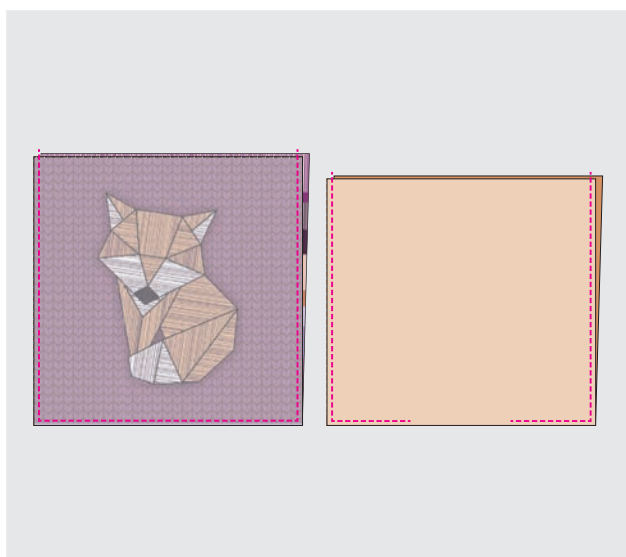
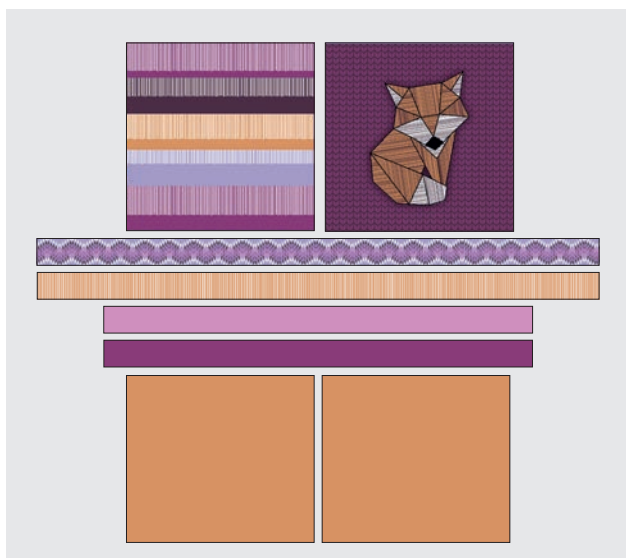
Stitch along all four pillow edges with a straight stitch. Trim seam allowances at the corners for a smooth turn. Turn your work right side out through the envelope flap. Press your work and insert the pillow insert.



  
**ALL DONE**



## SEWING INSTRUCTIONS SHOPPING TOTE



1

Cut 2 x square Happy Pillow DIY panels. Cut four strips from the panel. In addition, cut 2 x pieces of matching woven fabric measuring 42 cm x 40 cm for the lining.



IF YOU WOULD LIKE TO MAKE A DEEPER SHOPPING TOTE, CONSIDER ADDING A PIECE OF FAUX LEATHER TO THE BOTTOM.

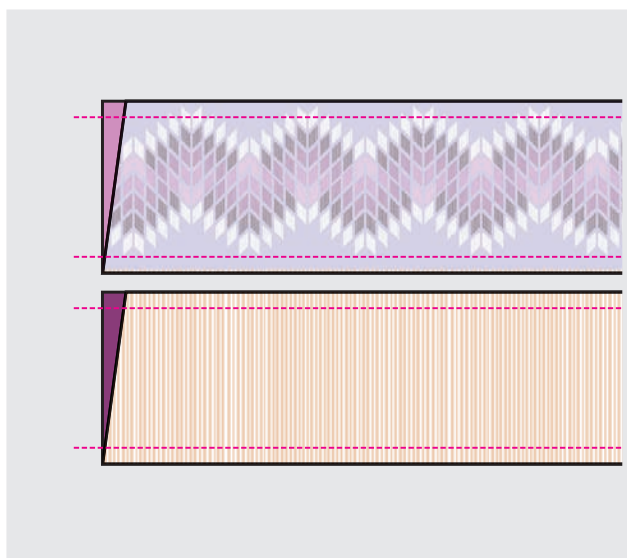
2

Lay the shopping tote outer and lining pieces right sides together. Stitch the side and bottom seams with a straight stitch. Leave a small opening for turning in the bottom seam of the lining.

3

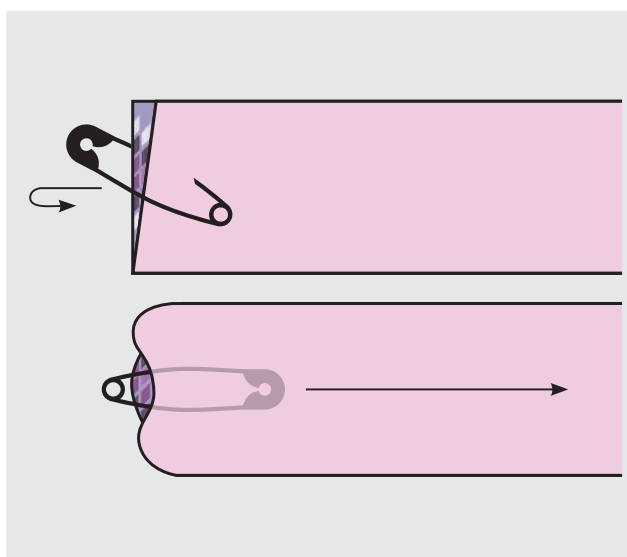
Trim the strips for the handles to 90 cm long.

## SEWING INSTRUCTIONS SHOPPING TOTE



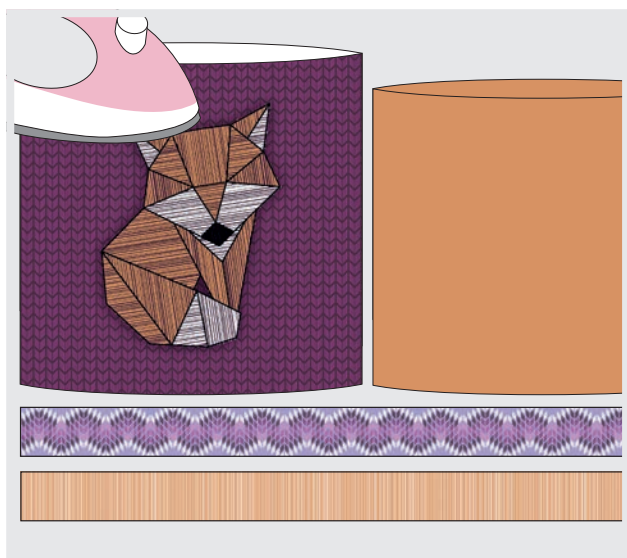
4

Lay two handle strips right sides together and stitch along each long side with a straight stitch. Repeat for the opposite handle pieces.



5

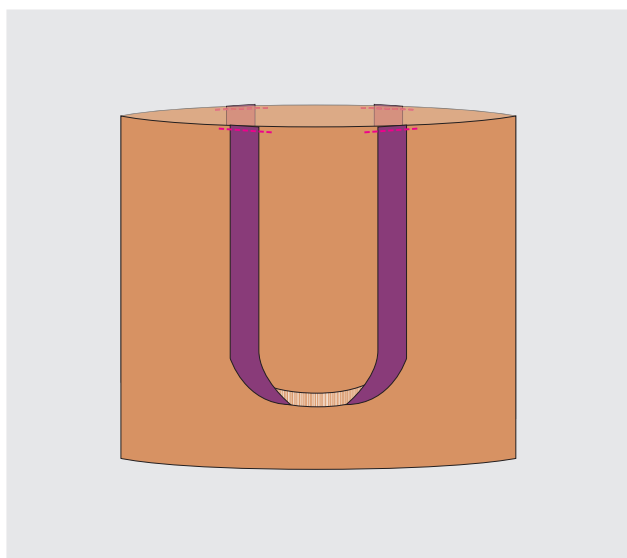
Turn the handle pieces right side out with the aid of a safety pin or bodkin.



6

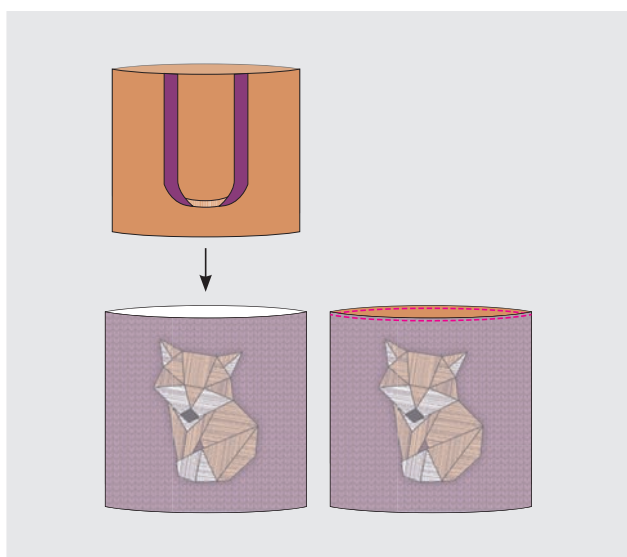
Press all pieces.

## SEWING INSTRUCTIONS SHOPPING TOTE



7

Pin the handles to the upper edge of the lining piece and secure with baste stitches.



8

Place the lining + handles piece into the tote outer piece right sides together. Align the side seams and secure with straight pins. The handles will be sandwiched between the two layers.

Stitch around the top of the shopping tote with a straight stitch, catching the handles in your stitching line.

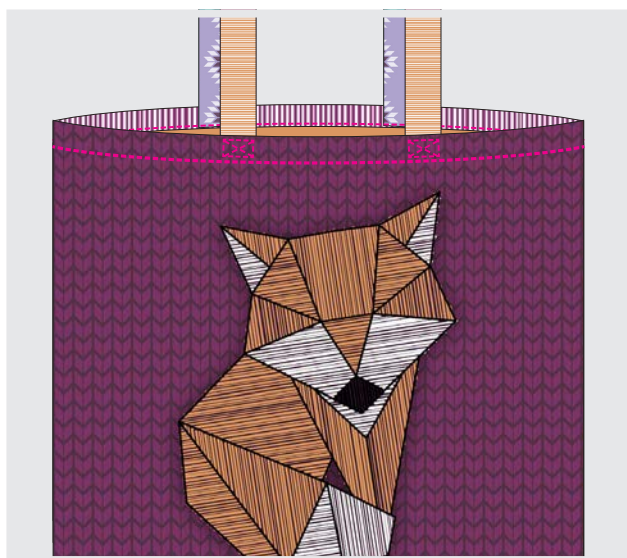


9

Turn your work right side out through the opening in the lining. Close the opening in the lining with a straight stitch. Insert the lining back into the tote outer. The lining will be somewhat shorter than the outer, which will leave a nice finished upper edge once topstitched.



## SEWING INSTRUCTIONS SHOPPING TOTE



10

Flip the handles upright and topstitch along the top edge. Secure the handles at their bases with box X stitches (optional).

  
**ALL DONE**

