

# CHERRY PICKING BAG

## BAG PANEL

FINISHES SIZE APROX. 30 X 40 X 10 CM



CHERRY PICKING  
Design & Art  
Studio's



# YOU WILL NEED:

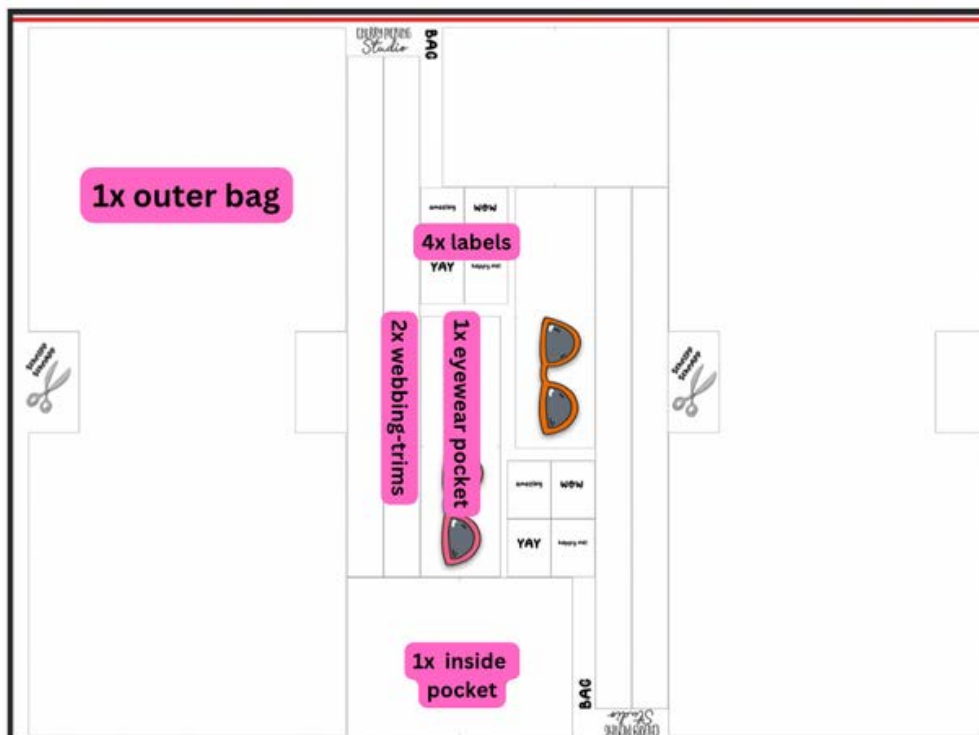
1. Outer fabric: Choose a Bag-Panel. You can make two bags with one panel.
2. Lining fabric: Faux leather, canvas, coated cotton or reinforced woven cotton, approx. 100 x 50 cm.
3. Webbing 150 cm long, approx. 3 cm wide.
4. Sewing machine, thread, scissors, pins, iron.

# PREPARATIONS:

On the panel you will find 2 bags. Cut the bag you want to sew.

You have the following pattern pieces per bag:

- 1x outer bag
- 2x webbing trims
- 1x inside pocket
- 1x eyewear pocket
- 4x labels



Cut the lining fabric. To do this, use your cut of the outer bag as a template.

The sewing allowance is 1 cm.

# LET'S START SEWING!



1.

There are four labels per bag on the panel, which you can easily make.

Fold the seam allowance inwards on the right and left side and iron them in place.



2.

Fold the label wrong sides together and iron it flat.

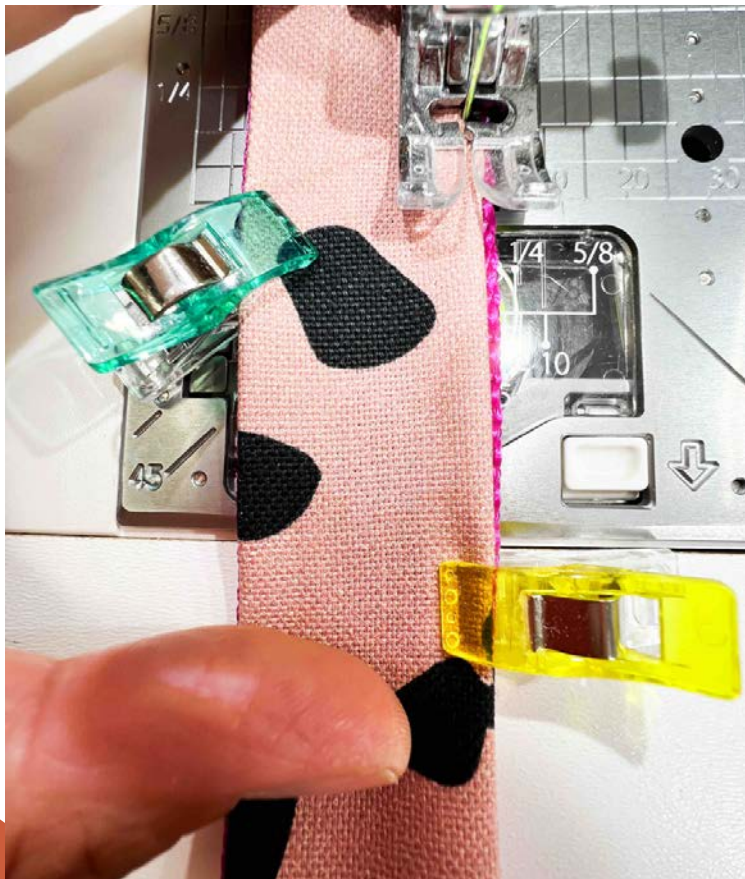


3.

Next is the webbing trim. Since my webbing is 3 cm wide, I iron the seam allowance of each panel 1 cm inwards.

If you want to see more of the colour of your webbing, iron in a larger seam allowance and vice versa.

It also looks great to take, for example, 5 cm wide webbing and stitch the trim on very narrowly.

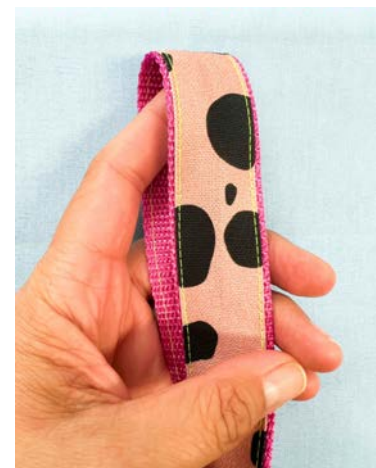


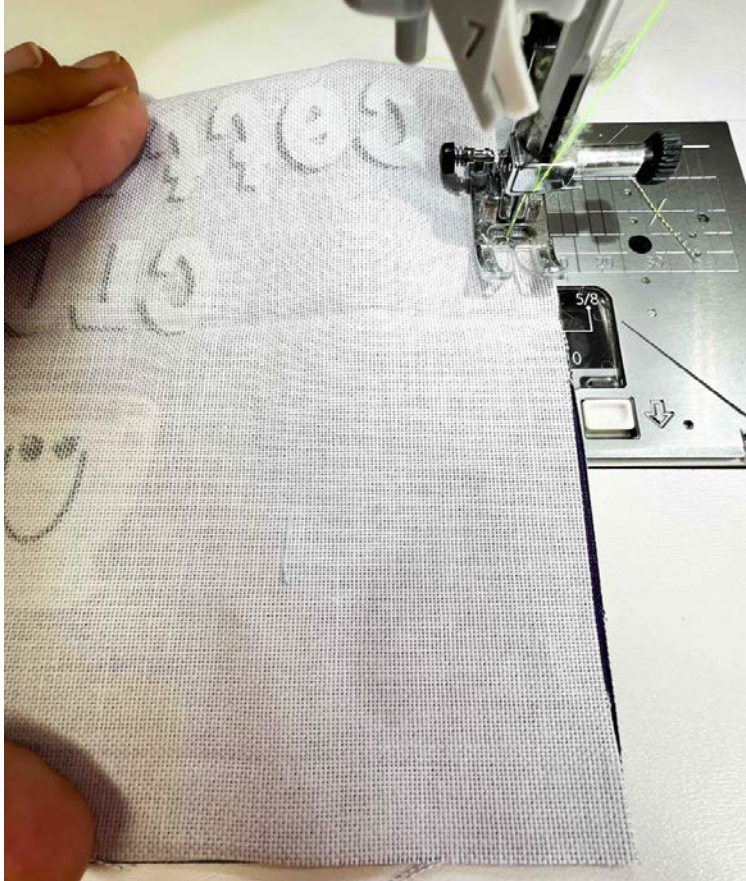
4.

Pin the trim onto your webbing and stitch it in place along the outer edges of the webbing.

5.

Iron finished bag handles.





6.

Fold the inner pocket right sides together.

Topstitch right and left (narrow side).



7.

Repeat the same procedure with the eyewear pocket.



8.

Turn both pockets inside out.  
Shape the corners nicely.



9.

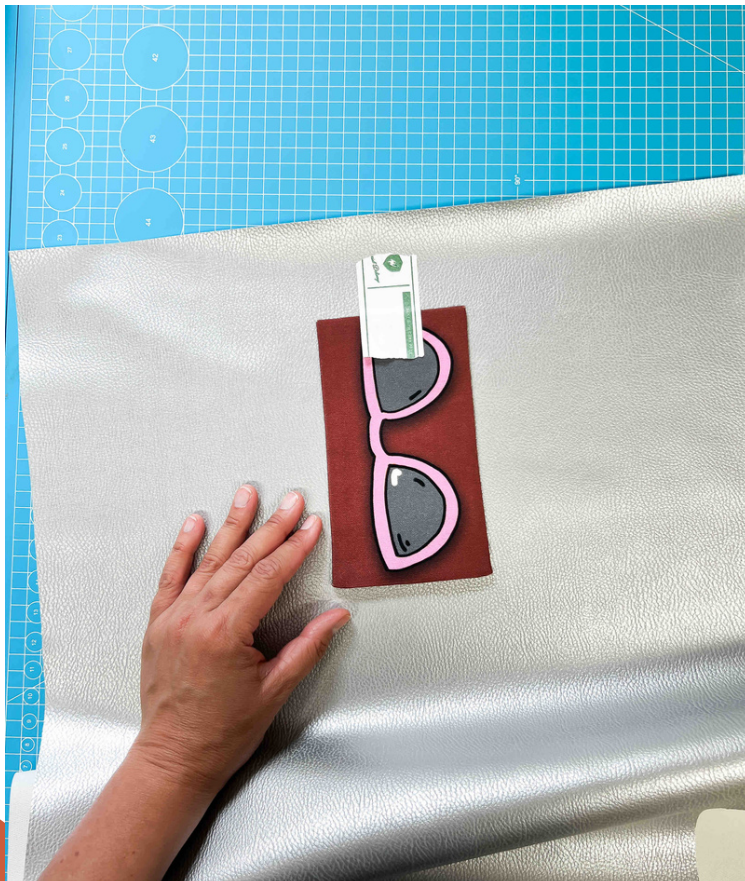
Press the open seam allowance  
to the inside.

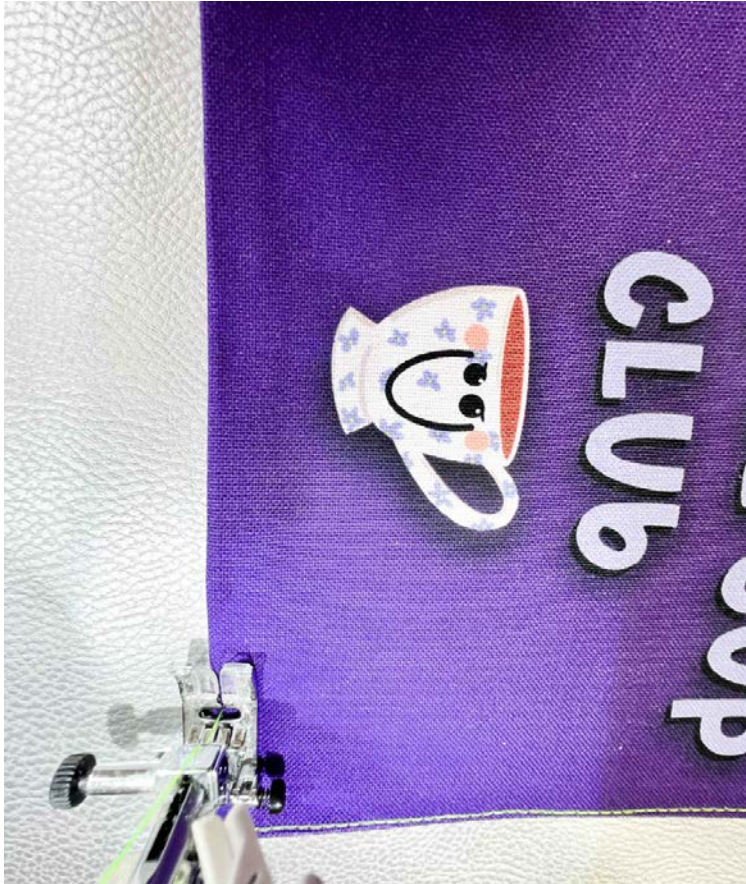


10.

Place inside pockets on the right side of the bag lining . The distance from the top edge is approx. 5 cm.

If the bag lining is made of imitation leather, you can secure the inside pockets with tape before sewing them on.





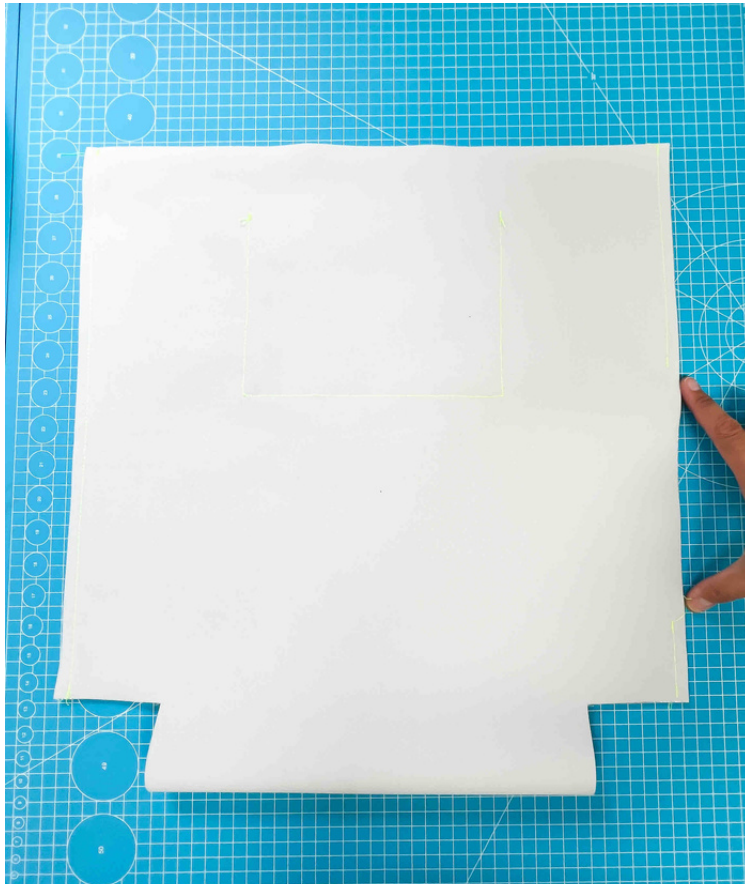
11.

Sew on pockets.

The pocket opening remains open.



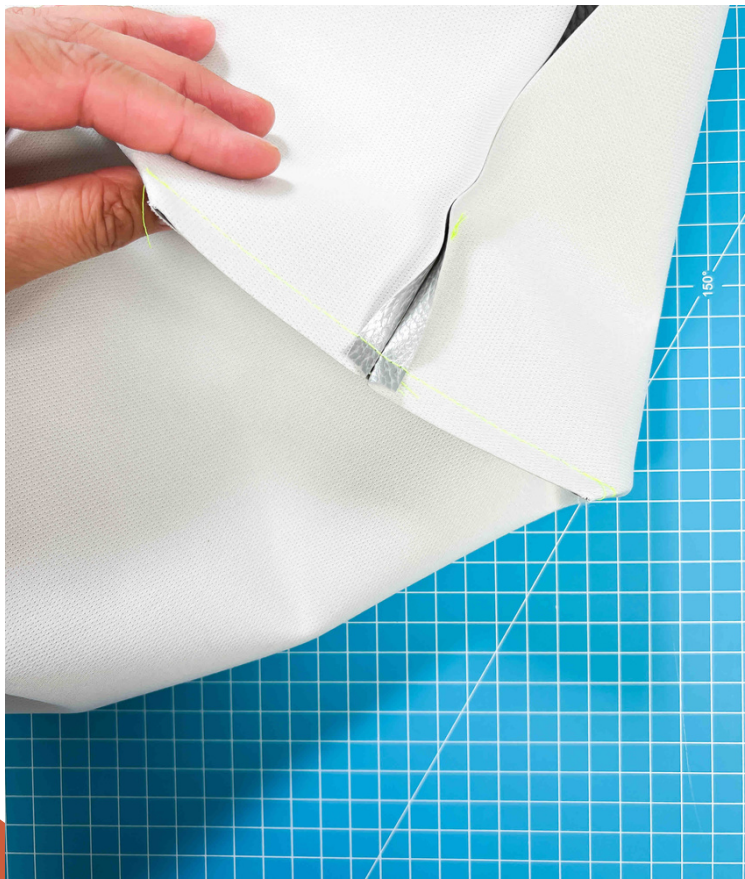




12.

Place bag lining right sides together and topstitch side seams.

Attention: Leave an approx. 18 cm long opening for turning on one side seam.



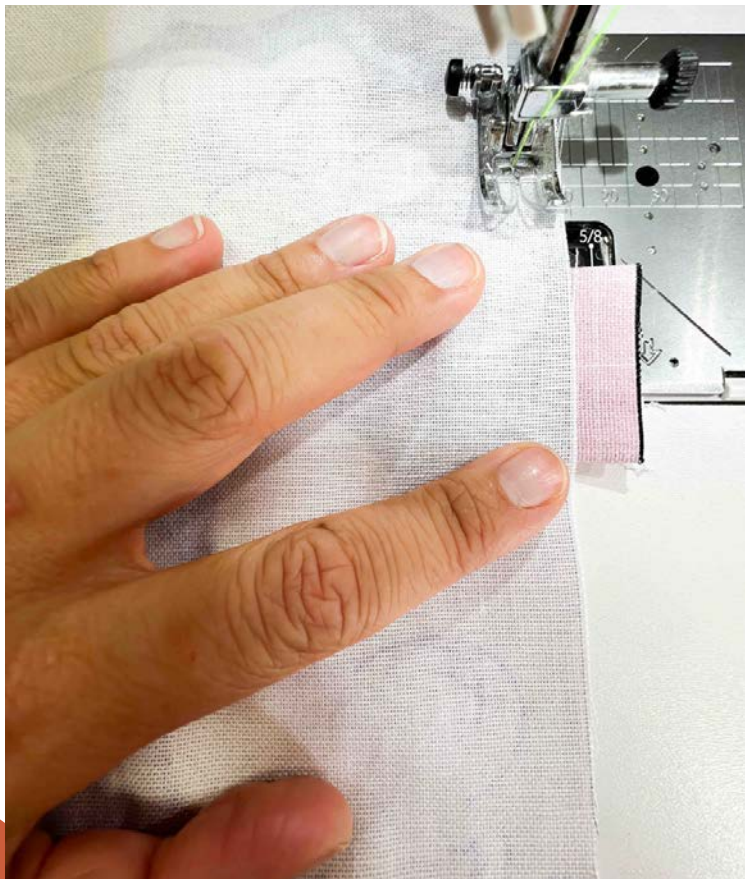
13.

Place bottom of bag lining right sides together and topstitch.



14.

This is what your bag lining will look like.

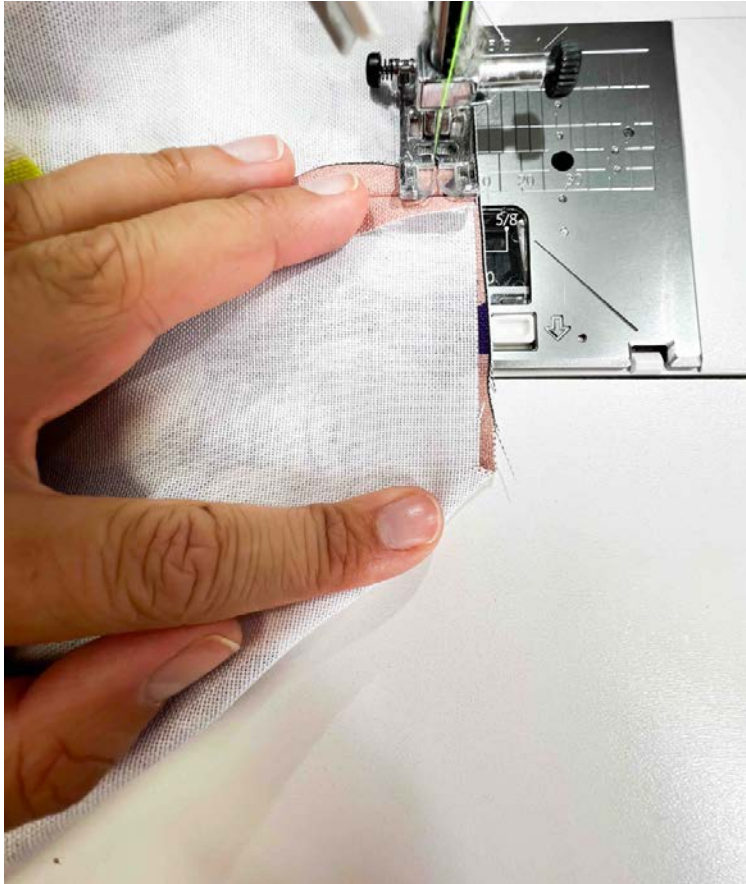


15.

Sew the outer bag. To do this, place the outer pocket right sides together along the fold.

If desired, insert the finished labels into the side seam.

Close the side seams.



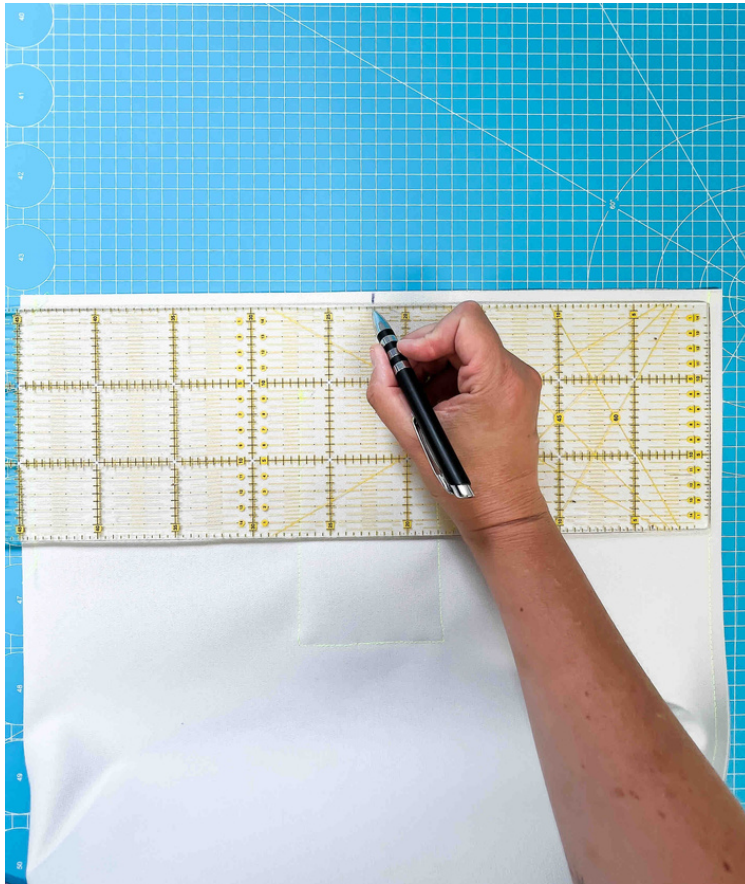
16.

Place the bottom of the outer pocket right sides together and sew together.



17.

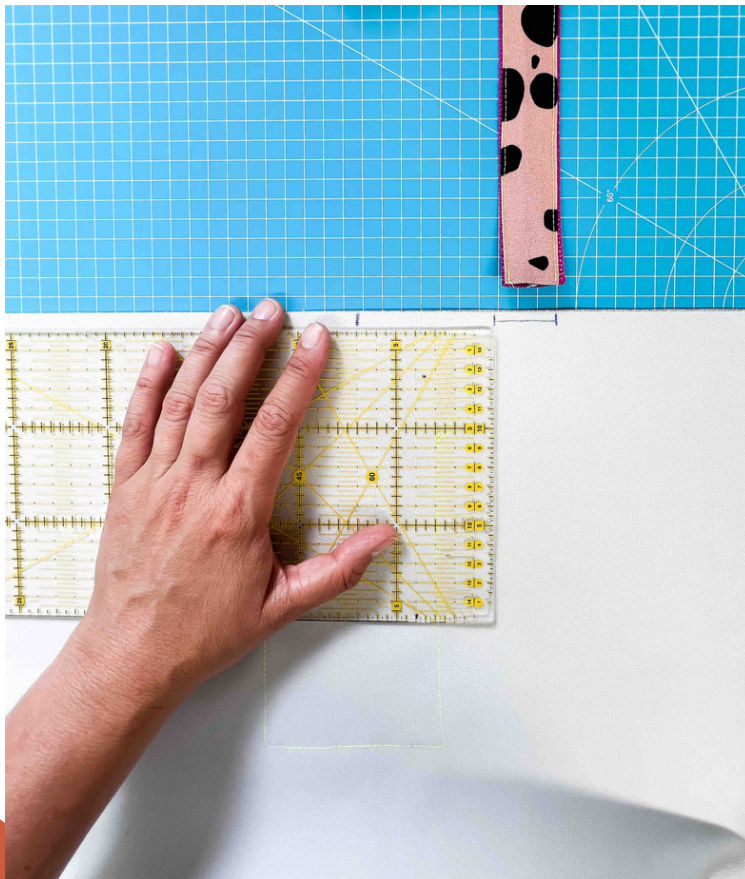
This is what your outer bag will look like.



18.

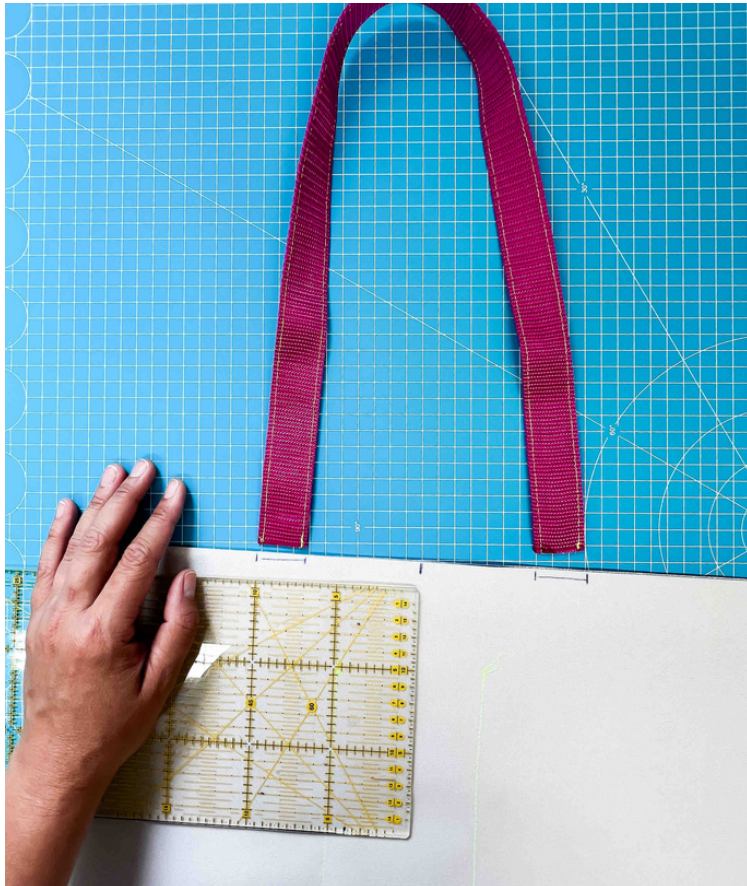
Position of the webbing straps:

Take your bag lining.  
Mark the centre of the upper edge of the bag.  
This should be at approx. 22 cm.



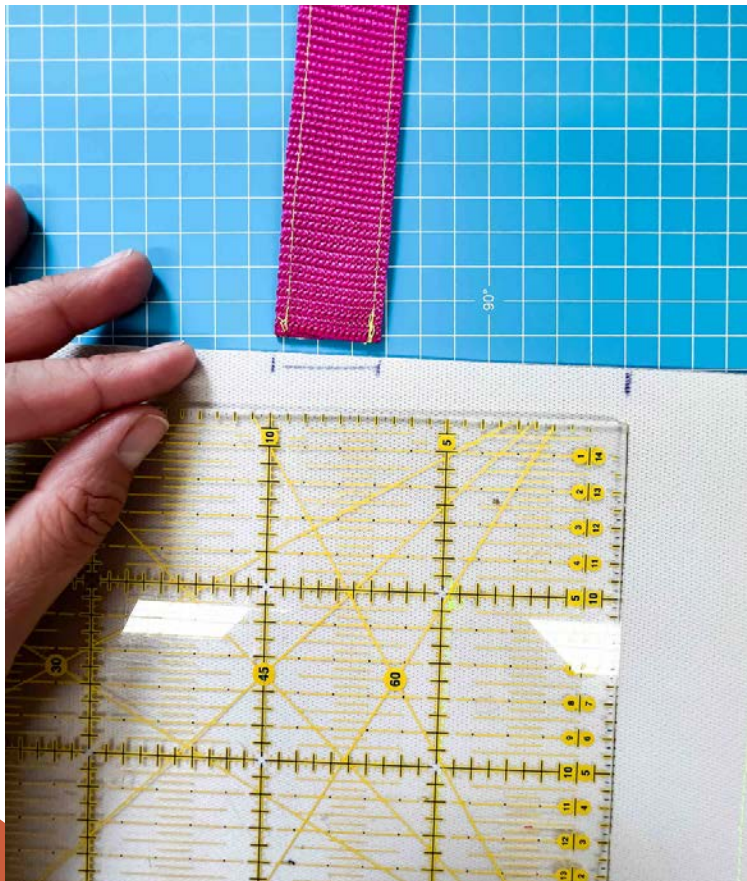
19.

From this centre, move 7 cm to the right and mark the width of your webbing from there.



20.

Do the same on the left side.



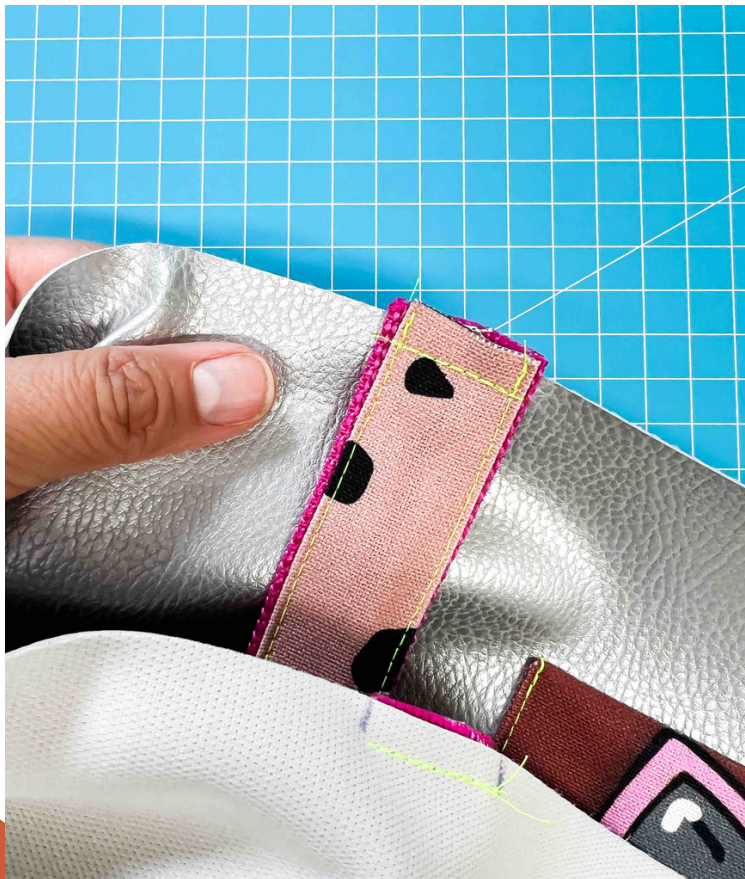


21.

Pin or clip your webbing at both marked positions.

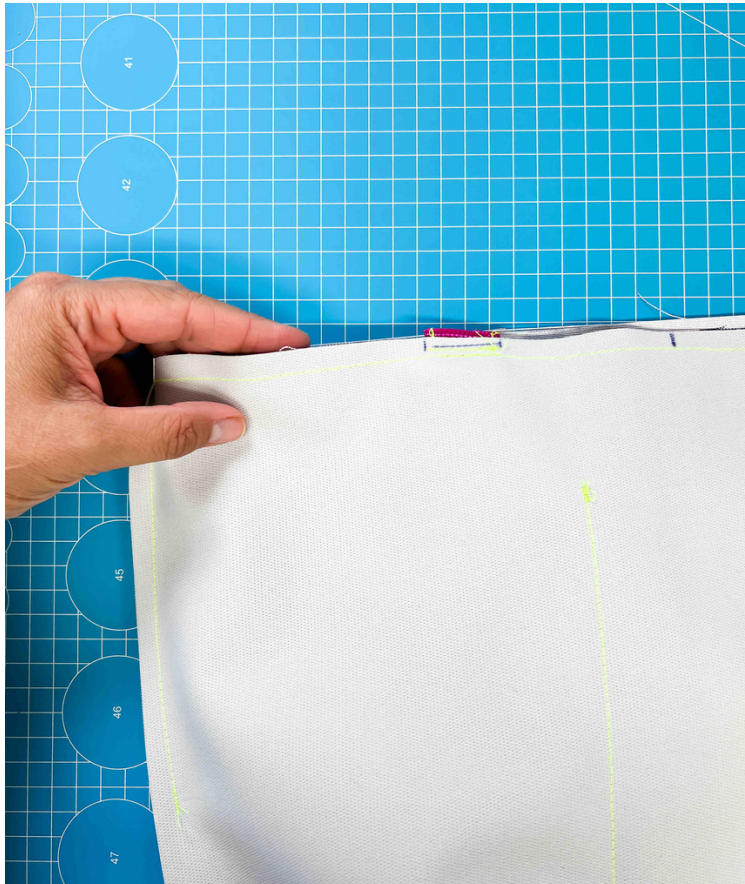
The webbing strap lies with the sewn side facing outwards. So you are looking at the right sides of the webbing strap and the bag lining.

Repeat this procedure on the other side of the bag.



22.

Sew on the webbing straps approx. 8 mm from the top edge.



23.

Insert the outer bag right sides together into the bag lining and topstitch along the upper edge with 1 cm seam allowance.



24.

Turn the bag through the turning opening.



25.

Topstitch this opening close to the edge.



26.

Topstitch the upper edge of the bag all the way around. Just as you like, once or twice.

All done!